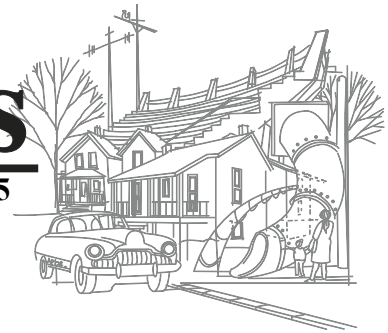


East Lawrence News

East Lawrence Neighborhood Association
P.O. Box 442393 Lawrence, Kansas - eastlawrence@yahoo.com
www.eastlawrence.com

January 2015



Save the Date! ELNA Yart Sale

ELNA will hold its annual yard and art sale – Yart! – fundraiser again this year on Saturday, March 28th 2014 from 8:00am to 1:00pm at the New York Elementary gym. This year, the sale will be the weekend after USD 497's Spring Break, so you'll have lots of time to clean out your spaces and collect those useful and unique items to donate to our sale. Check our March/ April paper newsletter, enews, website, facebook, and twitter for details later. Plan to come!

ELNA

General Meeting
Monday, Jan. 5th, 7-9pm
New York School Library

Agenda:

- ⇒ Adding a liquor license to Decade Coffee
- ⇒ 9th Street Update
- ⇒ Planning 2015 / Grants / Partnerships

Board Contacts

Aaron Paden, President
..... aaronpaden@gmail.com
785-840-6400

Jacki Becker, Vice President
..... jackioh@uptoeleven.com

Katherine Harris (KH), Treasurer
..... HarrisKMTC@gmail.com

Pam Blackburn, Secretary
..... pamblackburn55@gmail.com

Christine Kosirog... ckosirog@yahoo.com

Phil Collison phil@collison.com

Dave Loewenstein
..... dloewenstein@hotmail.com

Josh Davis cjadavis@gmail.com

Arch Naramore arch@sunflower.com

Sara Minges
..... sara@playfulawareness.com

Brenda Nunez 785-218-9138

Eric Jay eric@structrestruct.com

Cindy Suenram... csuen3@sunflower.com

KT Walsh 732 Rhode Island St.

ELNA Contacts

Lane Eisenbart, Coordinator
eastlawrence@yahoo.com .. 785-330-3552
www.eastlawrence.com

From the President

I ran across this preachy neighborhood horoscope for 2015: "Neighbors it is crucial is that we maintain our integrity by continuing to act as responsible caretakers, open to dialogue and willing to compromise. Yes that means you – ask for clarification instead of making accusations – listen before you assume – speak from your heart not your fears – and most importantly remember that while horoscopes maybe silly – this advice is pretty good." It said nothing about which kickball game would have the best grill items.



Well, we had ELNA Board elections this last November. And because you didn't show up to do it – I got stuck as your ELNA President for another year. Kind of a crummy deal if you ask me. There weren't many of you there – lowest turn out at a meeting in my multi-year tenure on the board. It was a terribly cold and dreary night, though, and who wants to get out and go to a meeting in that, eh? I suppose I would have probably opted to stay warm and comfy indoors too if anyone would have let me. But, since I didn't see you, neighbor, I just want you to know that we're here and listening. So don't hesitate to contact a board member with your questions, ideas, or concerns about anything happening in the neighborhood. Contact information for each of us is listed on the front page of this newsletter. With general input, you may email our coordinator at eastlawrence@yahoo.com, and she can also forward your email to the entire board. You can always send us an old fashioned paper and stamp letter too, if you wish. Our post office box address is listed somewhere in this newsletter—a time or two. Some of us even have phones we actually talk on from time to time, if that suits you best. At any rate, we're all here, and we're all listening.

Moving on – there continues to be a lot of discussion regarding the E 9th St Project right now. As a board, we will endeavor to follow the advice in the above neighborhood horoscope. If you have an opinion, a question, or an idea, I encourage you too to attend meetings, write letters, talk to your neighbors, and add your voice to the conversation. The success of the project and the general happiness of the people involved will greatly depend on each one of us engaging. Watch our enews, Facebook, and other City missives for details on meeting dates and times as they emerge. We'll try very hard to keep our website updated with that information, too.

continued on page 7

New Members November / December 2014

Phil Collison
Zac and Crystal
(and Wyatt and Sugar Magnolia) McIntyre
Pam, Scott, and Penny Blackburn
US Dept of Arts and Culture,
Lawrence Field Office
Shannon Reid
Lucille Toback
Kristine and Jeffrey Beaty
Tom Buller
Eric Watson
Sarah Wallace and Maya Crocker

Ben and April Sikes
Staci Ahlvers
Rudi Monson
Jessica Chilcoat
Charlotte Pessonni
Kendra Pittman Irwin and Bob Irwin
Cindy Suenram and Arch Naramore
Kristina and Michael Davis
Chris Lempa and Rachel Vaughn
Nick and Kendall Spase
Martha Thorpe
Lacey Koester

Hi, I'm an ELNA BlockHead!

Are you.....?

Are you easy-going and enjoy getting to know your neighbors?

Do you love where you live and wish to reach out to more East Lawrence residents?

Would you like to help build a safer and more connected neighborhood –starting with just your street? Then, you should be an **ELNA BlockHead!**

If you live in East Lawrence, consider volunteering as a **BlockHead** for your street...just your street.

- Reach out / talk to neighbors on your street
- Identify neighbor interest in ELNA newsletter/email communication and events
- Identify neighbors with special needs in case of emergency or disaster
- Identify neighbors willing to offer basement safe-havens for those who live on slabs or neighbors with special skills useful in a crisis
- Create a 'call list' for interested neighbors on your street—use for urgent communication, special neighborhood needs or disaster support
- Welcome new neighbors and share about ELNA

Strengthen East Lawrence Block by Block

Be a BlockHead!

Contact **Sarah Rooney** for more information
sarahro@kansasnva.org or 785-841-0118

PermaCommons Garden

The PermaCommons Garden at 1304 Pennsylvania St. was started 3 years ago by Steve Moring and Michael Almon and the Lawrence Sustainability Network. We are starting a new 3 year lease with the City of Lawrence with Cody Wingfield and Anna McCoy as coordinators.

Its design consists of permanent raised beds in curving, fluid lines with paths and “keyhole” cuts that allow easy access for planting and weeding. The mass of the beds allows for mixed plantings which combines diversity and the advantages of companion planting. Still under development is the water garden filled by the run-off of the rain. This will be the first season that we use the new rain catchment barrels that capture the rain from the roofs of the neighboring houses.

There are fruit trees and berry bushes, asparagus, and herbs that are growing nicely and will be the perennial part of the garden. The rest of the beds are to be planted with the succession of the seasons. And over all, red clover roams freely to fix nitrogen in the soil, hold the soil in place on the sides of the beds, and hold moisture by shading the soil.

The labor and harvest is shared in this garden model. There is more coordination involved for each member to understand the whole picture and the tasks at hand. During the last growing season, we generally met at a regular time on Sunday mornings. That worked well for most of our schedules. Emailing will be the way that each week's tasks will be outlined. Whoever can show up will know what to do. We can share in the planning of what to plant where and getting the needed supplies.

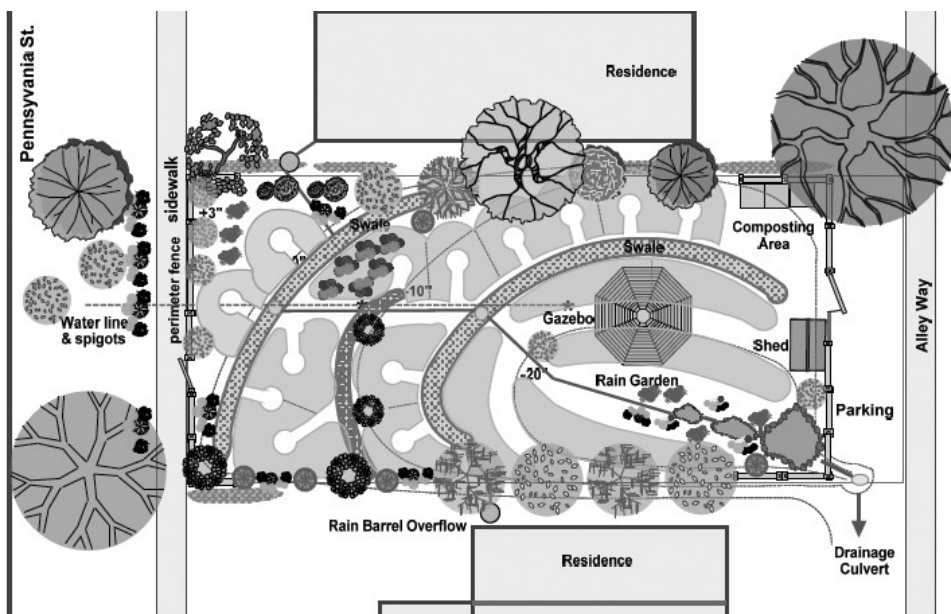
The annual dues will be paid in March and the amount of the dues will be determined by how many people sign up. The more members we have, the lower the dues will be.

This garden is a great cooperative experience and a valuable learning experience for developing a self-sustaining, organic, balanced ecosystem that produces food for many.

Contacts

Anna McCoy at
pannam@sunflower.com

Cody Wingfield at
cucucody88@yahoo.com



Adam Rohe, Progenitor of East Lawrence Artists – Dave Evans and Lane Eisenbart

Some might call him the original East Side artist. He had a fat lapdog and a penchant for ironic hair and tiny spectacles. He surely sometime stared moodily out the window at the Sandbar, contemplating his next work of art. He was a graphic artist by trade, but longed to paint classical landscapes.

Adam Rohe, our artist, bore some resemblance to Teddy Roosevelt and hung out at the Sandbar, not because he was hip, but because he lived and worked at the property at 17 E Eighth Street, what is now the Sandbar on historic Henry Street, from 1873 until his death in 1923. (The property was his studio downstairs from 1873, then was converted to additional living space upstairs for Rohe and his family upon his purchase of the building in 1883.)

Born in Indiana, Rohe served in both the US Navy and the Union Army, was a veteran of the Civil War, and arrived in Lawrence in 1872, presumably following a family friend. At this time in history, Ulysses S Grant was in his second term as president, Kansas had been a state for only eleven years, Quantrill's raid was just nine years passed, and Lawrence had an approximate population of 8,500. What is now East Lawrence was then widely known as the East Bottoms and was primarily the industrial and manufacturing district of the city. Rohe lived in the 900 block of Rhode Island Street in 1875 and 1876, and in the 700 block of New Jersey Street in 1879.

From his earliest days on ship during the Civil War, Rohe's drawings illustrated Harpers Weekly, New York's political magazine – drawings of Civil War battle scenes and cartoons for comedy and editorial emphasis. In Lawrence, Rohe worked primarily as a sign painter. He lent his brush to hand lettering local shop signs, posters, banners and the occasional postcard, sketch, illustration or brand image. Rohe was apparently superbly talented at gold leafing, a painstaking technique used in lettering. Rohe was also known to have painted scene curtains for several opera houses and theatres, both inside and outside Kansas. Rohe's breakthrough moment came in 1884 with the creation a statue of the Roman goddess Ceres, fashioned from Kansas native grains, for the Kansas exhibit at that year's World's Fair in New Orleans. Praise earned from Rohe's Ceres enabled him to expand his career as an artist, rather than simple tradesman, opening the door for other commissions in Kansas and surrounding states. He was nationally recognized for his designs for the Mitchell South Dakota Corn Palace, part of the 1893 Corn Belt Exposition. The Corn Palace of Mitchell South Dakota, though refurbished yearly since Rohe's time, stands today, attracting some 500,000 visitors per year.

We know from Rohe's daughter Alice's memoir (Alice herself became a legitimate, rare-for-the-time, female journalist and war correspondent) that Rohe's real desire was to paint landscapes, cityscapes, and portraits in the classical style. A University of Kansas professor once called

Rohe a "stray from the Renaissance." In the family's apartments upstairs at his historic address of 11 E 8th Street, Rohe placed portrait transparencies of Rembrandt, Rubens, Raphael, over the glass transoms in the hall. Below in his workshop, an observer could find the casts of Greek statuary and a "treasure desk" full of old art books and classical prints.

Adam Rohe was a practicing East Lawrence artist for fifty years. He managed to support a family and make a living as an artist in a time when art, even for those well-connected, was not well rewarded financially. It still requires hard work and ingenuity to support one's self as an artist in East Lawrence 143 years later. Some things never change.

Mail in Ballot

– New York School Site Council Request

Last year the Kansas Legislature and Governor Brownback cut funding for schools in Kansas. This resulted in a 1.4 million dollar hole in the Lawrence school district general fund. In an effort to continue the tradition of great public schools in Lawrence, and to have no effect on our district and children, the Lawrence School Board temporarily raised the LOB (Local Option Budget) 2% last year. In order to make this LOB permanent, and to maintain our current budget for years in the future, the district has called for a public vote on this matter in January.

If the initiative is not passed, the school district operating budget will be cut by 1.4 million dollars. 1.4 million is equal to cutting 25 teachers. Additionally, if not passed, it would at most decrease property taxes by \$14 on a \$100,00 house.

The Site Council of New York elementary school (as an independent group) encourages everyone to approve this initiative.

This vote is mandated by law to be a Mail In Ballot only! Be on the look out in your mail for it. Ballots will be mailed out to all registered voters on January 7th. It's important that you fill out your ballot and send it back right away! You MUST have your ballot received by January 27th for it to count. There will NOT be a polling location for this issue.

For additional information on the Lawrence School District Local Option Ballot, you may visit the USD 497 website.

You may also speak with NY Site Council members at New York Elementary's MLK Chili Feed on January 20th. We will have a table set up for more information on the LOB initiative and on how to become involved with Site Council. We look forward to talking to everyone!

“Intersection Repair” Project

Hello Friends!

I'm Alicia Kelly, sculptor, paper-cutter and general enthusiast of the arts. I moved to Lawrence ten years ago, and have been an active member of the arts community for the past seven years.

In the past six months, I have taken much notice and interest in community projects called Intersection Repairs that have been happening all over the US. Intersection Repairs, developed by the Portland, Oregon organization, City Repair, consist of painting murals directly onto residential intersections within a neighborhood. These engaging, collaborative artworks are intended to create a sense of identity among neighbors, while helping to calm traffic and promote local culture - a sense of 'taking back the streets' among the neighbors. Just Imagine the first Kansas Intersection Repair painted in Lawrence!

For more information on the project and organization in Portland, have a look at their website cityrepair.org

For the past three months, I have been working towards solidifying a proposal of an Intersection Repair in East Lawrence. Dave Loewenstein and the ELNA have been supportive and helpful in guiding the way, and sharing updates on this process in the ELNA enews. A month ago, a group of volunteer neighbors met and decided on an intersection to propose for the project, an intersection that seemed to be the best choice for Lawrence's first Intersec-

tion Repair. We chose the intersection at 10th and New Jersey.

We met with Nancy DeGarmo, principal of New York Elementary, and she had great enthusiasm for the proposed project. She did inform us that street construction is planned for the summer/fall of 2015 between 9th and 10th of New Jersey.

The next step is to inform neighbors about the proposal and to collect volunteers needed for the design team. Volunteers will hold a few meetings, and solidify a design. After which, the proposed intersection repair will be presented to the Lawrence Cultural Arts Commission.

How will it be funded? In January and February of 2015, we will apply for grants- such as the Community Arts Grant hosted by the Lawrence Cultural Arts Commission. We will also do active fund raising events!

We intend to have the design first laid down by volunteers with chalk. On one beautiful day in the fall of 2015, we'll block party/potluck with members of the neighborhood/community, and everyone can help paint the intersection and leave their mark in Lawrence!

All it takes is one day to change a little bit of East Lawrence, and to add our ideas and creativity into the public view to improve the future of our charming community!

Cheers, Alicia Kelly

NYE MLK Chili Feed 2015

New York Elementary School, at 936 New York St, will host the annual Dr. Martin Luther King Chili Feed again this year Tuesday, January 20th from 5:00 to 7:00pm in the New York School gymnasium. Yes! It's happening at the school in spite of the construction! It might be a little different in terms of set up this year, but the event must go on! What's little inconvenience to observe this fantastic 30 some year tradition to get together with a couple hundred of our favorite friends and neighbors?

The public is invited to this community celebration of the life of Dr. King. Bring your friends, family, neighbors, and coworkers, and support New York Elementary by enjoying a bowl of chili (there will be a vegetarian option), crackers, carrot/celery, dessert and drinks. There is no set cost. Instead, diners will be asked for a donation. The ever-amazing St Luke Choir will entertain us once again.

Neighbors can contribute desserts, help clean up, and maybe contribute a pot of veggie chili or two, if they are so inclined. Email Lane at eastlawrence@yahoo.com with questions about how you can help.

Dave CRAWFORD
★★
city commission
Lawrence, Ks
treasurer Phil Collison
Paid for by David Crawford for City Commission

Do you get our weekly enews? Each Thursday morning, we send out an email full of news and information regarding things happening in the neighborhood and the city at large. Email eastlawrence@yahoo.com if you'd like to be added. Or, you can self subscribe at <http://www.eastlawrence.com/join/thursday-enews/>.

River Clean Up Fall 2014

On November 15th around 30 East Lawrence neighbors and friends gathered at the Riverfront Conservation Area north of the Santa Fe Station for a morning of camaraderie and stewardship of our East Lawrence Riverfront. The morning was chilly with light sprinklings of snow coming in around noon but we were warmed by our efforts, new friendships, and hot coffee, hot chocolate, and bagels.

By the end of the morning we had amassed a great pile of various forms of garbage – including tires, trash, junk, road signs, clothes, bedding, and, for some odd reason a broken arc welder. By the time we finished it was difficult to find a scrap of trash in the entire park. It is in really great shape now, so everyone should go take a stroll if you are able.

We are planning to have park cleanups three times per year. Our next cleanup will be in March or April. More information will be forthcoming prior to the next cleanup day. It is our hope that our continued presence and stewardship of the riverfront will help keep it the pristine habitat area that it is. This winter is an excellent time for everyone to take a walk in the park and witness the natural beauty. Who knows, you may even spot a



bald eagle or two along with the multitude of other flora and fauna.

Much thanks goes out to all of the volunteers.

Here is a list of those who signed in (please forgive misspellings where names were hard to read!)

- Pam Blackburn
- Linda Kucza
- Malachi
- Annie Neri
- Amy, Mark, Max, and Hugo Cowardin
- Megan Hawman
- Jacki Becker
- Arie Auxter
- Lane Eisenbart
- Dave Loewenstein
- Aaron Paden
- Pam Roberts
- Jenine Meston
- Dan Ward
- Katy and Lexi Meston-Ward
- The Darby Family
- David Whitenight
- Daina Bitters and Kids
- KT Walsh
- Josh Davis

Sincerely, Mike Myers – Cleanup Coordinator
See you in the Spring!

WE SUPPORT LOCAL BUSINESS

LAWRENCESIGNUP.COM

VEHICLE WRAPS

BANNERS

YARD SIGNS

PROMOTIONAL ITEMS



SIGNUP



Tom Harper

CRS, ABR, GRI,
e-PRO, REALTOR

785-218-6351

*Appreciating
Older Homes*

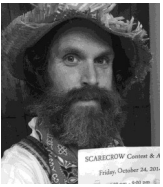
visit my website
Tom-Harper.com



ELNA Board Introduction

The East Lawrence Neighborhood Association elected a new board last November.

Welcome your new Board: President Aaron Paden, Vice President Jacki Becker, Secretary Pam Blackburn, Treasurer KH Harris, and Coordinator Lane Eisenbart, joined by Board Members, Phil Collison, Josh Davis, Eric Jay, Christine Kosirog, Dave Loewenstien, Sara Minges, Arch Naramore, Brenda Nunez, Cindy Suenram, and KT Walsh.



Aaron Paden

How long have you lived in East Lawrence? 7 going on 8 years

How long have you been on the ELNA Board? Five sometimes seeming very long, sometimes seeming very short, years.

Why do you choose to serve on the ELNA Board? Because I really love my neighborhood and I want to see good things happen here.

What kind of projects/causes are you interested in working on in this year of service? I look forward to the fun things, the good things, like the Yart Sale. I hope everyone brings some good junk for me to go through. I can never refuse your nice pearl button button ups.

If you could learn to sing/play any song, like really rock it, what song would it be? Nina Simone's "Feeling Good"

Pam Blackburn

How long have you lived in East Lawrence? I moved to East Lawrence in May 2013. I was looking for an area that had more of a sense of community than what I felt Shawnee had (where I had lived the previous 20 years).

How long have you been on the ELNA Board? I have just completed my first year on the ELNA board.

Why do you choose to serve on the ELNA Board? Being involved in the community is important to me.

What kind of projects/causes are you interested in working on in this year of service? Walkability and the sustaining the history of the neighborhood in the midst of the changes underway.

If you could learn to sing/play any song, like really rock it, what song would it be? Nope! Not getting me to sing or play anything! Now to be able to tap like I could in my youth is another story...



Christine Kosirog

How long have you lived in East Lawrence? 13 years

How long have you been on the ELNA Board? 5 years

Why do you choose to serve on the ELNA Board? Because I continue to learn so much.

What kind of projects/causes are you interested in working on in this year of service? Holiday Adopt a Family, fundraising with KVKL, slinging ELNA merch, figuring out how to preserve, increase, and celebrate our cultural and economic history and diversity in the face of change.

If you could learn to sing/play any song, like really rock it, what song would it be? Happy Birthday, so I could show off my amazing skills ALL THE TIME.

Jacki Becker

How long have you lived in East Lawrence? I've lived in East Lawrence over ten years.

How long have you been on the ELNA Board? 6-7 years

Why do you choose to serve on the ELNA Board? Former board president deron belt thought I would enjoy it.

What kind of projects/causes are you interested in working on in this year of service? working on the 9th street corridor project, always into playing kickball and helping raising money for the east side. excited to see the new york school renovation completed.

KH

How long have you lived in East Lawrence? 22 years

How long have you been on the ELNA Board? 3 years, I think.

Why do you choose to serve on the ELNA Board? I had been attending meetings because of my concern about downtown encroaching into E Lawrence with the building of 900 NH. After attending some months, a treasurer was needed and that's a skill I could provide, so I did.

What kind of projects/causes are you interested in working on in this year of service? I continue to serve because it's a very exciting/worrisome time in the neighborhood with the East 9th St Corridor project coming. The possibility exists for a lovely/enhancing project for East Lawrence, or a gentrification/negatively affecting project.

If you could learn to sing/play any song, like really rock it, what song would it be? Cream, Sunshine of Your Love



Dave Loewenstien

How long have you lived in East Lawrence? 20 years.

How long have you been on the ELNA Board? The first time about two years. This time about two months.

Why do you choose to serve on the ELNA Board? It's critical, if we want a healthy neighborhood that has a voice on the issues that affect it, that those with relevant experience, skills and knowledge serve in some capacity. My work and experience intersects with many of the challenges and opportunities our neighborhood is engaged with now so it felt like the right time to come back and help in any way I could.

What kind of projects/causes are you interested in working on in this year of service? I am especially interested in working with neighbors to better understand and then act on the potential opportunities and impacts of the arts-based development projects that are being proposed for East Lawrence.

If you could learn to sing/play any song, like really rock it, what song would it be? "Badlands" by Bruce Springsteen.





Eric Jay

How long have you lived in East Lawrence? Since March 2014, but have owned a business in EL for 6.5 years.

How long have you been on the ELNA Board? 1 year

Why do you choose to serve on the ELNA Board? To get involved and have a voice.

What kind of projects/causes are you interested in working on in this year of service? Interested in working on all sorts of things.

If you could learn to sing/play any song, like really rock it, what song would it be? The Rolling Stones “Gimme Shelter”

Sara Minges

How long have you lived in East Lawrence? Since June 2012

How long have you been on the ELNA Board? Since November 2013

Why do you choose to serve on the ELNA Board? I love living in East Lawrence and wanted to have a voice on issues affecting East Lawrence. To make sure my vote counts.

What kind of projects/causes are you interested in working on in this year of service?

If you could learn to sing/play any song, like really rock it, what song would it be? “Love” by the Beatles



Arch Naramore

How long have you lived in East Lawrence? 21 years

How long have you been on the ELNA Board? 2 months

Why do you choose to serve on the ELNA Board? Wanted to represent the old people.

What kind of projects/causes are you interested in working on in this year of service? Leaving 9th St Alone.

If you could learn to sing/play any song, like really rock it, what song would it be? “Conjunction Function”



Lane Eisenbart

How long have you lived in East Lawrence? 9 years in October. Minus a summer or two here and there.

How long have you been on the ELNA Board? As I am fond of saying, I just work here. I’m not a board member, but serve as ELNA’s only paid employee.

Why do you choose to serve on the ELNA Board? I Love ELNA!

What kind of projects/causes are you interested in working on in this year of service? I’ll continue my regular duties – memberships, enews, newsletters, website, email, social media, events, etc – but I’m particularly excited to be writing some history articles with Dave Evans. It’s good stuff!

If you could learn to sing/play any song, like really rock it, what song would it be? Queen’s “Somebody to Love”. Not, you know, because I need to find somebody to love, but because I’ve watched that movie “Ella Enchanted” with my girl about a bajillion times. What? It’s a really good movie/scene/song. Everybody loves Queen.



Phil Collison

How long have you lived in East Lawrence? I have lived in East Lawrence since 2004. Before that I lived and hung out in the ‘hood off and on since I moved here in 1976.

How long have you been on the ELNA Board? I have served 3 years as President, 3 as Treasurer and now my second year on the board.

Why do you choose to serve on the ELNA Board? I want to continue to work to keep East Lawrence the vital place that it is. I want folks to know that ELNA is truly working to keep this your neighborhood.

What kind of projects/causes are you interested in working on in this year of service? The 9th street corridor will be the big item for 2015. The measure of success should be if it meets our neighbor’s needs. The project is bringing in many influences from outside our neighborhood to work with those from within. Neighbors will want to actively engage with this project so that it can be successful. East Lawrence has a varied cultural past. This new project should demonstrate those and connect them to the future. Ad Astra per aspera!

If you could learn to sing/play any song, like really rock it, what song would it be? 21st Century Schizoid Man!



Cindy Suenram

How long have you lived in East Lawrence? 28-1/2 years

How long have you been on the ELNA Board? Almost 2 years

Why do you choose to serve on the ELNA Board? To help represent the old-timers

What kind of projects/causes are you interested in working on in this year of service? Try to help keep the integrity of the neighborhood; help keep it viable and vibrant

If you could learn to sing/play any song, like really rock it, what song would it be? “Mister Rogers Neighborhood” theme song



KT Walsh

Josh Davis



Brenda Nunez



President’s Letter continued from page 1

It’s a brand new year in East Lawrence. I’m looking forward to seeing all you neighbors out shoveling your walks and plotting your to new gardens for the spring. Before we know it, it’ll be March, and we’ll be getting ready for the best yard sale ever, the Yart Sale!

In the meantime, let’s all plan to get together at the MLK Elementary Chili Feed on January 20th.

See you there! (Pssst... Don’t worry – it really is just chili - not a meeting.)

-Aaron

East Lawrence Neighborhood Association
PO Box 442393
Lawrence Kansas 66044-2393

PRSRT STD
U.S. POSTAGE
PAID
LAWRENCE, KS
PERMIT #542

Join ELNA for \$1.00

HELP YOUR NEIGHBORHOOD – GET A BIG BANG FOR A BUCK!

Your \$1.00 membership in ELNA and contact information help us represent East Lawrence in our city and county government and to meet the needs of our neighborhood. Please note, memberships are per individual, not per household.

Support us. Let us support you.

\$1.00 for in-neighborhood individuals \$5.00 for out-of-neighborhood individuals
\$10.00 for in-neighborhood non-profit entities \$20.00 for in-neighborhood businesses
\$100.00 lifetime individual membership

Date: _____ Name: _____

Address: _____

Phone: _____ E-mail: _____

- We print the names of new and returning members in the bimonthly paper newsletter. Check here if it's OK to print your name.
- We're working on creating a block-by-block calling/check-in network of neighbors to contact in the event of an emergency. It's a work in progress. Check here if you'd like to be contacted about being a BlockHead—a contact person for your block in the event of emergency or issue.
- Check here if you'd like to be added to our ELNA Yahoo group. An e-vite will be sent to you.
- Check here if you'd like to be added to our "Thursday ELNA News" weekly e-newsletter email list.
- Check here if you do not want to be included in email messages.
- Check here if you would like your address removed from our paper mailing list.

Send this form and your check payable to ELNA to:

ELNA, PO Box 442393 Lawrence KS 66044

**Plus! Visit ELNA's website for information on *new* tshirts and merchandise!
Click the paypal button to donate securely there!**

ELNA Needs Your Help! Please Volunteer!

Mark what ELNA events/skills you would like to volunteer for:

- Work Days
- YART (Yard/Art) Sale
- Block Party
- Adopt-A-Family
- Art
- Music
- Photography
- Gardening
- Grilling
- Fund Raising
- Historic Preservation
- Serving on the ELNA Board
- Website/Technical Management
- Baking/Cooking
- Other: _____