

East Lawrence News

East Lawrence Neighborhood Association
P.O. Box 442393 Lawrence, Kansas - eastlawrence@yahoo.com

www.eastlawrence.com

July 2016



ELNA

General Meeting

TUESDAY, JULY 5th, 7-9pm
New York Elementary
9th & New York

Agenda items include:

- ⇒ Downtown Grocery Update
- ⇒ Treanor with Downtown Grocery Building design
- ⇒ Lawrence Loop presentation

ELNA's summer meetings will take place at the
Lawrence Creates Makerspace
at 512 E 9th.
Tuesday July 5th

From The President, June 2016.



Aaron's gone out on summer travels and I've been asked to fill in this month. What a tough year it has been so far. The East Ninth Project has been impaired by a City Budget that cannot withstand so many new requests for funding in areas that are all important to Lawrence citizens. The Ninth Street Project was already projected to be \$1 million over budget, and that didn't include phase 2 funding. New City Manager Tom Markus pulled the funding and accepted responsibility for that. Some of the new initiatives being requested include more support for affordable housing, more effective mental health programs, general pedestrian and bicycling improvements all over the City, as well as a new Police facility and new jail. As Markus put it at the budget session at the East Lawrence Rec Center earlier this year, which of these already funded and necessary City services should we take from to fund the new requests? There is no question we need our sidewalks improved all over our neighborhood. We need

to rally around some new effective way to get that.

Summer has begun in East Lawrence. There are many things to look forward to. Kickball at Hobbs Park has already begun, and ELNA has been selling concessions at a couple games already. We always need volunteers to donate food and also help with prep, setup, working the tables, cooking and teardown. 200 and often more people generally turn out to watch the game of the week. It is quite the scene. Email our coordinator at eastlawrence@yahoo.com if you'd like to contribute your time or food.

Our meetings will be at the Makerspace at 9th and New Jersey on the regular dates and times this summer. Except for July, which is delayed one day, due to the holiday, to Tuesday, July 5th.

I know a lot of folks are discouraged right now. Come out to the meetings and let's get going on some new initiatives. Bring your ideas to the meetings. As ELNA we should be doing a whole lot of things, it takes new blood and new champions to own and see new projects come to fruition. I know we have the diversity to do that! I encourage you to continue to be involved! — Phil Collison, Vice President

Board Contacts

Aaron Paden, President

..... aaronpaden@gmail.com
785-840-6400, call or text

Phil Collison, Vice President

..... phil@collison.com

Pam Blackburn, Secretary

..... pamblackburn55@gmail.com

Katherine Harris (KH), Treasurer

..... harriskmtc@gmail.com

jacki becker..... jackioh@uptoeleven.com

Josh Davis (Penn St)

..... cjwadavis@gmail.com

Joshua Davis (NY St)

..... jd12345@gmail.com

Eric Jay..... eric@structrestruct.com

Christine Kosirog..... ckosirog@yahoo.com

Dave Loewenstein

..... dloewenstein@hotmail.com

Matt Pryor..... matthewpryor@mac.com

John Sebelius..... johnsebelius@gmail.com

Cindy Suenram..... LAN Representative

..... csuen3@sunflower.com

KT Walsh..... 732 Rhode Island

ELNA Contacts

Lane Eisenbart, Coordinator

eastlawrence@yahoo.com... 785-330-3552

www.eastlawrence.com

HELLO, EAST LAWRENCE!

PLEASE TAKE OUR SURVEY!

LPL is undergoing a Community Needs Assessment in an effort to bridge gaps in information, resources, and services available to our community. Please join this conversation by participating in one of these options:



Go online! Visit lawrencepubliclibrary.org/community-needs-assessment for more information about how to get involved.



Take our survey! Fill it out online at www.surveymonkey.com/r/lplsurvey, or call the library at 785-843-3833 to request a paper copy delivered to your residence.



Join the conversation! Sign up to participate in a future focus group or interview.



Take **50%** off your accumulated library late fees when you complete our survey!*

*Terms and conditions apply.

School News

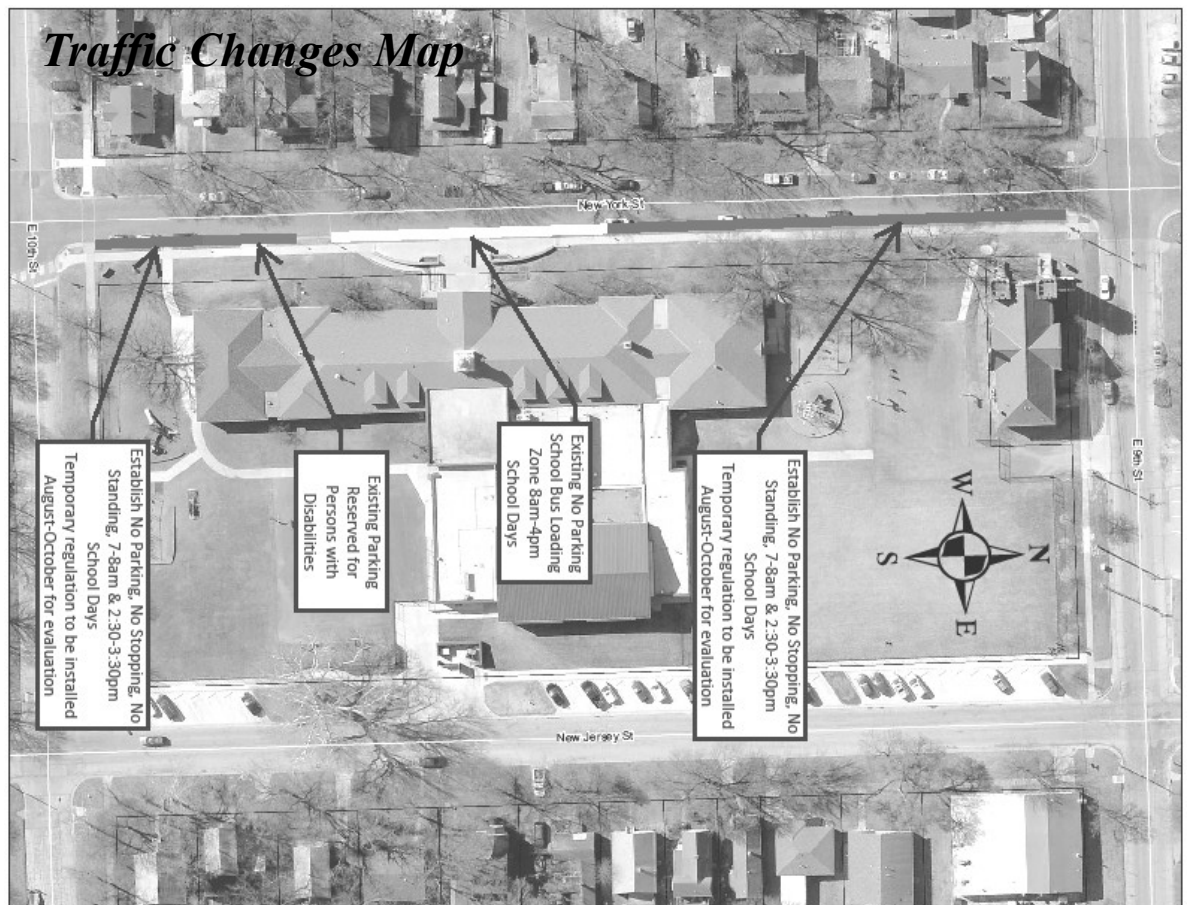
Back to School in August!

New to Lawrence? New to the 'hood? Don't forget about USD 497's Welcome & Enrollment Center, the first stop for all new students enrolling in the Lawrence Public Schools. It's your "One-Stop Shop" for enrolling new students K-12 and Enrolling kindergartners that did not attend round up. You can come prepared by downloading enrollment forms at www.usd497.org, and some items you will need include: a birth certificate for the enrolling child, family contact information, the child's immunization record, and family proof of residency. Your proof of residency must be a current utility bill, a lease agreement, or a contract on new home purchase. At the welcome center, you can pay fees and establish a fee payment plan and applying for child nutrition benefits (free and reduced price school meals) and fee waivers. The Welcome Center is located at 110 McDonald Drive, Lawrence, KS. Enter on the south side of the complex. The welcome center is open Monday-Friday, 7:30 am-4:30 pm. Walk-ins are welcome, and daytime/evening appointments are available. For more information or to schedule and appointment call 785-330-1921.

School starts for grades 1-5 on Wednesday, August 17th, with an early dismissal at 1:35pm. Grades 1-12 return on Thursday, August 18th, for a full day of classes. Kindergarten classes will be on an alternative schedule. On Monday, August 22nd, all grades will return to a regular schedule.

Traffic Changes at New York School this Fall

Due to concerns about safety during pick up and drop off at New York School, the City of Lawrence will be making traffic flow changes to New York Street this Fall. These changes will be implemented temporarily as school starts this August, and continue through October. In October, after this trial period, a public meeting will be held to discuss the efficacy of the traffic changes and seek new input and insight. The map below gives a visual of the traffic flow changes. In summary – **from 7:00-8:00am and 2:30-3:30pm there is no parking or stopping on the east side of New York Street on the block in front of the school.** Parking on the west side of New York Street for residents of the homes on the west side will remain unchanged. Caregivers are advised to park on the side streets if they wish to park and walk into/ up to the school with their children. Between 8:00am and 2:30pm, in the event of a tardy or an appointment that a guardian must walk in to excuse, for example, caregivers **may** park on the east side of New York Street in front of the school where it is permitted as indicated by signage (not in the bus loading or handicapped accessible zone). With your comments and questions, you may contact Mark Thiel, Assistant Public Works Director at mthiel@lawrenceks.org



With questions specific to New York Elementary you may call the school at (785) 832-5780. With questions about Liberty Memorial Central Middle School, you may contact the front office at (785) 832-5400.

Downtown Grocery Project Update

For the past 2-plus years a core group of 8 to 10 people have met every week to discuss various ways to bring a full line affordable grocery store to downtown in order to address food desert issues which primarily affect North and East Lawrence, although there are other areas of the city affected, involving about 20% of the city. We have also met regularly with representatives from Hobbs-Taylor Loft staff, City Commission members, including the Mayor, who are all strong advocates for the project, the new City Manager Tom Marcus, County Commissioner Nancy Thellman and other representatives of food-related interests in Lawrence as well as area neighbors. Our core group has members from East, North, Old West and Pinckney neighborhoods, as well as members from the Douglas County Health Department (who did the survey many of you participated in).

Our ideal space has always been the former Borders building, because of its central location. When local developer Doug Compton purchased the building, we initially thought a store on that site was not going to be possible, but it's looking more and more likely. Negotiations between Mr. Compton and his partner in the venture, Treanor Architects, and a well-established area grocery chain have been very promising. Treanor staff will meet with our DTGrocery group in late June, and present at the July ELNA meeting, to solicit feedback from people who will be most impacted by such a venture. In addition to issues about the actual process of a grocery store (which will be addressed once the grocer agrees to a lease,) site design elements and ways

the City can facilitate the project (which might look like assistance with pedestrian walkways and parking lot patrol), right now we are trying to address concerns about the building's footprint, parking on site both surface and underground (NOT on Rhode Island St) for both customers and employees, safety issues such as effective but unobtrusive lighting, site screening/fencing, historic district concerns, preservation of the building's historic north wall, and visual integration of the building's architecture with surrounding buildings.

East Lawrence residents and others who are interested in the Downtown Grocery Committee and increasing access to food for all in general can follow us on our Facebook site (go to Facebook and search Downtown Grocery for Lawrence KS) <https://www.facebook.com/groups/DTGrocery/> where you can check out posts, events and join the conversation. Also the Downtown Grocery Committee meeting is open to the public the last Thursday of the month when we meet at the Lawrence Public Library downstairs in the Local History Room at 9am. We hope to see you online or at our monthly open meeting or at the July 5 ELNA meeting with Treanor Architects.

— Submitted by Janice Melland, DTGrocery core member, East Lawrence resident and DT business owner

VanGo Recruiting for Fall

DO YOU NEED A JOB? ARE YOU BETWEEN 18-24 and NOT IN SCHOOL? WOULD YOU LIKE HELP PLANNING YOUR FUTURE? ARE YOU INTERESTED IN ON-THE-JOB TRAINING IN VARIOUS FORMS OF ART? IF SO, CONSIDER APPLYING FOR VAN GO'S THE ARTS TRAIN, A NON-PROFIT TRANSITIONAL EMPLOYMENT PROGRAM.

Van Go is accepting applications now and throughout the early-mid summer (interviews with selected candidates to take place in August 2016) for positions starting in mid-September...

HOURLY WAGE: \$7.75 per hour

WORK SCHEDULE: Monday-Friday 8:30 am-12:30 pm

WORK LOCATION Van Go, Inc., 715 New Jersey, Lawrence, QUALIFYING GUIDELINES apply.

To get an application or for more information visit our website (www.van-go.org) or call Kristen or Jeff 785-842-3797.

A Note from Intersection Repair

Friends and neighbors!

We want to let you know that we are aware of the wear on the intersection mural at 10th and New Jersey and are actively working on figuring out why. We have submitted samples to our paint vendor and are awaiting a final determination as to why, in certain parts, the paint did not adhere properly. Once we get the results, we will figure out our next steps. If you have any questions/ comments, please feel free to reach out.

We will keep you updated and we thank you for your continued support!

The Intersection Repair Team
Katy Clagett katy.clagett@gmail.com

Sunrise Pie Auction!

It's the moment you've all been waiting for! Mark your calendars: Sunrise Project's annual Pie Auction will take place on Saturday, August 20th, 5-8pm in Hobbs Park! We are on the hunt for a professional auctioneer, so if you know someone, email info@sunriseprojectks.org.

Hike Through History on the Burroughs Creek Trail

The Hike Through History Walk and Talk happened. Principal of the project, Henry Fortunato, pictured, gave a presentation on the collaborative project to a crowd at the Lawrence Public Library on Tuesday, June 16th.



Henry Fortunato

On Saturday, June 18th at a very warm and sunny 10 am on the Burroughs Creek Trail, approximately 65 people gathered to hear the presentation in real space. Topics covered in the Burroughs Creek Trail Hike Through History project include; the history of the railroad line that came before the trail, the German POW camp on 11th, Langston Hughes's recollections of his time in Lawrence near 12th, the Oregon Trail crossing at 15th, Quantrill's raid crossing near the same location, William S Burroughs near 19th, some local notable families including Haskell and Barker, and the history of agriculture in Douglas County, as told through the story of the grain elevators south of 19th.

Look for the informative panels about the project on display at the Lawrence Public Library in July, and again at our East Lawrence Rec Center in the fall. Feedback forms will be available at the Library exhibit to collect your own stories of history along the Burroughs Creek Trail. Questions, comments, and input for future topics of discussion on history along the Burroughs Creek Trail can also be directed to Community liaison Lane at leisenbart@yahoo.com



Pictured, the crowd at the Hike Through History Walk



Tom Harper
CRS, ABR, GRI,
e-PRO, REALTOR
785-218-6351

*Appreciating
Older Homes*

visit my website
Tom-Harper.com



What's Up at the Penn House?

There are some exciting changes at the Penn House these days. Do you know much about it? Here's an interview with Shine Adams of Sun Cedar, a History of the Penn House, and a small article about what's new and what's the same and how you can help.

Interview with Shine Adams of Sun Cedar, April 2016 -- Lane Eisenbart

LANE: OK. So I really only have three questions. I've read about Sun Cedar before, I think in the Journal World.

SHINE: Cool.

LANE: So I think I have a vague idea of what it is, but, why don't you tell me, in your words, what Sun Cedar is to you.

SHINE: I started Sun Cedar a couple years ago. I moved to Kansas, to Lawrence, from New Orleans, Louisiana, in order that I could, kind of reset my life. I went to rehab in Atchison, Kansas, and quit drinking. And as I quit drinking, I found myself ultra inspired and I realized that as I am approaching middle age, the second half of my life, I can do whatever I want. So I made of list of things that meant something to me, and social service was one of them, and learning was the other. Those were the primary things. I started going to KU and volunteering at the Lawrence Community Shelter and the local jail, and from that, it just sort of organically happened. I am also a carpenter, so I started hiring people I would meet in the twelve step programs, or at or through the jail or the shelter to help me out in my woodshop. I had such positive support from the community that I decided to go legit, so to speak. I went to the Secretary of the State's office and filed to become an above board organization, and I've been focusing more and more on making Sun Cedar its own thing. We're thinking in terms of big picture now, making it repeatable so other organizations can use the template we're creating. Sun Cedar is an organization that exists to get people who are facing significant obstacles in re-entering the workforce the chance to build skills and develop a resume so that they can reintegrate into the mainstream workforce. We're a stepping stone. We give people a chance to work. It's super simple.

LANE: What kinds of things do you make?

SHINE: We make these tree shaped air fresheners.

LANE: Yeah! I have one in my car. Christie [Dobson, director of the Ballard Center] gave it to me.

SHINE: Awesome. I was going to bring some today, as gifts, but... my mom has them all. She's helping with packaging.

LANE: Ha ha. Nice.

SHINE: Yeah, we made these, and we're expanding our range of products. We make a cedar shoe box, which is very nice. And cedar hangers, which are also very nice. Kind of high end. Craftsman style joinery.

LANE: Where do you sell them?

SHINE: We have a website that we do some sales through. We also have a wholesale page on our website. Our business plan calls for us doing primarily wholesale, but I've been so busy with the nuts and bolts of starting this business, that I haven't had a really great chance so far to get deep into marketing. I need to be traveling around to trade shows, and getting the product exposure. This phase of the business is so much about establishing the day to day protocol. Hopefully 2016 will see me collecting more wholesale accounts. We sell through the Merc, and we did a special sale at 10,000 Villages. Wonderfair is another outlet here in town. We're always looking for more.

LANE: Why East Lawrence? Why do you want to be here?

SHINE: I met Christie about a year ago. She had read about Sun Cedar in the paper, and you know how Christie is, she's very engaged. She called me up and she said "I wanna check out what you're doing." I said, "come on by." And Christie and I developed a friendship and kept in touch. We'd go out have juice together every couple of weeks, just to kind of gossip and stuff. And when she became Executive Director of Ballard Center, there was a need for changes to be made at Penn House, and she invited me, Sun Cedar, to be a part of that. I think that Ballard Center and Penn House see a benefit to bringing in some fresh energy, and I'm certainly that. I'm energetic. And I think that social entrepreneurship, if that's actually a term, I don't know.

LANE: I don't know either. It sounds good. I think we just made it up.

SHINE: (laughing) Social entrepreneurship is a very hot topic right now and a lot of people involved in charity and the non-profit social service world are tired of dumping money into a black hole, basically. Especially in Lawrence, with some of the intrigue and problematic decisions made by certain leaders, the idea of social entrepreneurship is a hot topic. People like to see results, and people like to see value. There's a difference between just taking money that's for emergency services from the community and stimulating the economy and giving an actual exchange with the community, and focusing on solutions. And Christie is a very solutions oriented person, as am I, and together we are ratifying the mission of Penn House. Keeping the emergency services that exist and have been in place here for years, but now adding this new way of thinking, using the slogan, "community solutions". It's about getting people rehabilitated and reintegrated, not just saving people at the last minute, with the last ditch effort. It's about putting people on the right path. So! They have the space, I'm the new blood. And of course, Penn House being an institution, they're lending their credibility and community and presence to Sun Cedar. They got their chocolate on my peanut butter.

It's just a great fit. And then my relationship with the Sheriff's Office, from volunteering and getting to know people in the re-entry program is also an asset. You know, this room, the room we're sitting in will be used for programming that is pertinent to all three of our [*Penn House's, Sun Cedar's, and the Sheriff's Office*] missions. We'll do GED classes. We'll focus on education and skill building. We'll do MRT classes -- Moral Reconation Therapy -- which is a rehabilitative, cognitive, behavioral therapy that's about developing empathy and an understanding of the impact of our actions.

LANE: Moral training?

SHINE: Uh huh. So I'm super excited about that. The Sheriff's Office will do that, and Sun Cedar is going to host the resume building and GED workshops through the Adult Education Center. We'll have some cooking classes, some nutrition courses. My mom is going to come in and show us some recipes that people who are getting started can do for cheap that aren't horrible for them. And then Liz Keever from Just Food will be cooperating with that. Just the other day, I met with Women's Fresh Start. Have you ever heard of them?

LANE: I have not. no.

SHINE: Women's Fresh Start is a kind of partner with Willow. A program for women that is very much like Sun Cedar, but specifically for women who have had a lot of traumatic experiences, who have lifestyle problems that are holding them back from entering the workforce and being self-sufficient. I'm a big fan. They make soaps. They'll be sharing in the programing in this space as well.

LANE: Nice.

SHINE: I love the idea of having a community center. And this all goes back to what I was saying about marketing earlier. I've been so busy meeting people and working with people, trying to get the press to write about us, that I haven't had enough time to dig into sales and marketing, and this, having this cooperative environment means that I can lean on the partners to help with the programming I'm looking forward to.

LANE: Ok. Last question. What can we, as the neighbors, as the neighborhood, do to help you in your mission?

SHINE: High fives.

LANE: (laughing) High fives? Ok.

SHINE: We're doing a fundraiser on Go Fund Me. We've spent weeks talking to donors in private meetings, to get it kicked off right. We've got some local businesses that have been supportive in the past. We're looking at needing about \$75,000, and that will give us, all three agencies, security, and enable us to remodel the building and keep hiring and keep expanding our services, while keeping a baseline operating budget.

LANE: Keep the lights on?

SHINE: Yes! We sat down together and we figured out the absolute minimum required to walk into mid 2017 with the doors open and continuing what we're doing now.

LANE: So that's the magic number?

SHINE: That's the minimum number. And then everything else we generate throughout the year will be really useful in adding to our plan. We're pretty confident about that number. But, you know, crowd funding is weird. Sun Cedar did a successful Kickstarter campaign last year. I was tearing my hair out. And then about three weeks into it, we got an Upworthy article and everything was great. But, I don't know if we'll get Upworthy again. And also it's a very local concern so we're definitely depending on the support of the people of Lawrence. But Lawrence is such an awesome town, and this is such an awesome, ground breaking idea of cooperation! I really feel other Sheriff's Offices in other cities can look at what we're doing and do it in other cities. This is yet again, Lawrence being a leader in the Midwest. Whatever happens, we're doing it. It sure would be a lot easier if our fundraiser was successful. Barring that, high fives for real. Positive feedback feels so good. I'd like to feel like I'm working with the community, not just for the community. I really love getting high fives.

LANE: Ok. Excellent. Bonus question: Is Shine your real name?

SHINE: My birth given name is Shining Mountain Adams. My father was adopted by native people in the sixties. And it's kind of an odd name to carry around, but I've done it all my life, so...

LANE: Right, so, it doesn't seem at all weird to you.

Penn House History

After reading Dave Evans' 27 pages on the history of the Penn House, it's not difficult to see that the organization remains, even in 2016, not far from it's roots. The Penn House has always been a public service organization, seeking to help people, and help people help themselves.

In 1967, the Kansas Endowment Association received an anonymous donation of \$9,000 for the purpose of purchasing the house at 1035 Pennsylvania Street, in order that it might be turned into a community services center. The house was, at that time, a one hundred year old two story home, on a double lot. 1035 Pennsylvania was built in 1872 by Joseph Rahskopf. The Rahskopf family had deep roots in Lawrence, among some of the first settlers, and well known millers, wagon builders, and businessmen. The Rahskopf family owned 1035 Pennsylvania until 1960. Years later, it was revealed that the anonymous donor of the \$9,000 was Anna Ballard "Petey" Cerf. Anna Ballard Cerf was a well known philanthropist throughout Lawrence. With money made by her father in the insurance

business in New York, and her own investment, Anna Ballard Cerf donated thousands of dollars over many years to help establish the Ballard Center (named after her mother,) Kansas Audio Reader, Kansas Advocates for Better Care, and the LMH Endowment Association.

After the building was purchased as a location for community services on the East Side, in 1969 the federal Office of Economic Opportunity, Department of Human Development and Family Life, granted approximately \$97,000 to establish a research and outreach program at the Penn House. The program called the "Family and Community Research Project" was directed by KU Sociology Professor Keith Miller and his wife Ocoee Miller. The Project leased the Penn House building from KU Endowment for \$1 a year through 1974, when it was deeded to another Douglas County Improvement group. Funding from the OEO, along with public donations, saw the Penn House through 1973. In 1974, the Penn House began receiving financial support from the United Funds (now United Way) group. In the mid 1980s, the Penn House also began to receive revenue-sharing funding through the City of Lawrence. Cuts to federal Community Development Block Grants under changing government ideals and constant changes to program requirements with the United Way ensured that the Penn House always sought creative new ways of funding their services.

Throughout the 1970s the Penn House day to day operations were largely run democratically by a group of mothers in the neighborhood, with Ocoee Miller as director. Families and individuals in need could come to the Penn House to purchase household goods, such as clothing, linens, dishes, and kitchenware. Those in need without money could get items for free or in trade. Sewing and craft space, tools, and classes were offered, and many of the items made put up for sale in the thrift shop. Classes on budgeting, cooking, household management, rape prevention and self defense, basic car care, and home repair and winterization were also available to Penn House clients. At one time, the Penn House even held it's own kind of "currency" -- a yellow sheet of paper with the words "Freedom Credit" printed on, earned through work at the Penn House and used to purchase items there. A 1970 report shows the Penn House boasted an active membership of 80 families. A 1980 report tells of 400 to 600 clients served per month. Patrons of the Penn House used the shared commodities food store, the thrift shop, the nursery and sewing and crafts center. Families in distress, battered women, and single parents also came to the Penn House for help in applying for government assistance, legal assistance, emergency rent, utility, or medical bill assistance, access to job training and tutoring services. The Christmas Adopt-a-Family program that continues today at the Penn House, has its roots in the Penn House's Soul Santa of 1971. Another mission of volunteers to the Penn House was to help elderly and low income persons, those unable physically

or financially, to comply with City codes governing junk in and hazardous home conditions. A Penn House newsletter was once published monthly, circulating to over 1,000 homes, to keep clients informed of changes in government programs and as a progress report for supporters and friends.

By 1980, the Penn House building was in desperate need of repair. After a small fire, by arson, damaged the nursery and sewing area, the electrical and heating systems showed their age, and termites had done their damage, 1035 Pennsylvania was slated for demolition. Not without conflict and disagreement in the neighborhood, on the City Commission, and among area public service agencies, 1035 Pennsylvania was razed to the ground in November of 1981.

The Friends of Penn House Inc, comprised of preeminent developers of the time, Billings, Schwada, Moore and others, and Penn House Board members, collected an estimated \$70,000 in donated materials, equipment, and labor for the construction of a new building at 1035 Pennsylvania. National Guardsmen helped the Penn House move goods to temporary storage. A sort of publicity stunt and record setting, a modern day barn raising, the new (and current) Penn House was built in nine and a half hours on Saturday, December 5th 1981. The construction crew included about 150 laborers, with professional construction workers (both union and non-union and from often “competing” firms) and people from the neighborhood and Penn House volunteers.

Through the 1980s and the early 1990s, the Penn House continued to offer services to those in need in East Lawrence and all over town. Federal and City and United Way funds continued to fluctuate, leaving Penn House scrambling but persevering. Records show that more than 6,000 individuals sought assistance at the Penn House in 1993, with the help of only three full time employees, one part time employee, and numerous volunteers.

In 2005, Ballard Community Services acquired Penn House, and has continued services and operations at the Penn House location to this day, providing Douglas County residents with rent, utility, prescription, food, commodities, clothing assistance, and more.



Christie Scanlin-Dobson and Shine Adams

At the Penn House Right Now!

A full list of services currently offered at the Penn House can be found on the Penn House website. The clothing pantry, including a work clothes closet, continues to be available to clients of the Penn House. Rent and utility assistance, as well as the Holiday Bureau, the holiday adopt-a-family program, can still be accessed at the Penn House. The food pantry once housed at Penn House has moved entirely to the Ballard Center, but a multi-agency diaper bank will soon be housed in the building, as well as some employees of the Sheriff’s Office reentry program, and of course, Sun Cedar. Donations of new and gently used clothing and shoes, especially clothes for laboring and sturdy boots, as well as some office wear, large sizes, pots and pans, dishes and utensils, and diapers of all sizes are always in need. Drop off of donations can be made during office hours at the Penn House.

In addition to donating to the Sun Cedar/ Penn House fundraising campaign, you can contribute to the Penn House’s yearly school supply drive. Every year at this time, the Penn House, in partnership with EKCAN, the Salvation Army, United Way, Just Food, and other agencies, collects funds and items to give to low income kids to start the school year. Each child receives a new pair of shoes and a backpack full of supplies. The most needed items are traditionally ear bud headphones, highlighters, backpacks, and 3 ring binders. Items can be donated at the supply drives at both Walmart locations, all Dillon's and Hy-Vee locations, Checkers, and Office Depot on July 16th, 17th, 23rd and 24th.

Douglas County residents wishing to receive from the Back to School program can fill out an application at the Penn house July 11th to July 29th, 9 a.m. to noon and 1 p.m. to 4 p.m. Applicants will need to bring identification and social security cards for the applicants, proof of income and/or a free or reduced lunch letter.

Questions can be directed to Wayne at the Penn House during open hours or by email at wayne@ballardcenter.org.

www.eastlawrence.com

East Lawrence Neighborhood Association
PO Box 442393
Lawrence Kansas 66044-2393

PRSRT STD
U.S. POSTAGE
PAID
LAWRENCE, KS
PERMIT #542

Join ELNA for \$1.00

HELP YOUR NEIGHBORHOOD – GET A BIG BANG FOR A BUCK!

Your \$1.00 membership in ELNA and contact information help us represent East Lawrence in our city and county government and to meet the needs of our neighborhood. Please note, memberships are per individual, not per household.

Support us. Let us support you.

\$1.00 for in-neighborhood individuals \$5.00 for out-of-neighborhood individuals
\$10.00 for in-neighborhood non-profit entities \$20.00 for in-neighborhood businesses
\$100.00 lifetime individual membership

Date: _____ Name: _____

Address: _____

Phone: _____ E-mail: _____

- We print the names of new and returning members in the bimonthly paper newsletter. Check here if it's OK to print your name.
- We're working on creating a block-by-block calling/check-in network of neighbors to contact in the event of an emergency. It's a work in progress. Check here if you'd like to be contacted about being a BlockHead—a contact person for your block in the event of emergency or issue.
- Check here if you'd like to be added to our "Thursday ELNA News" weekly e-newsletter email list.

Send this form and your check payable to ELNA to:

ELNA, PO Box 442393 Lawrence KS 66044

Plus! Visit ELNA's website for information on *new* tshirts and merchandise!

Click the PayPal button to donate securely there!

ELNA Needs Your Help! Please Volunteer!

Mark what ELNA events/skills you would like to volunteer for:

- Work Days
- YART (Yard/Art) Sale
- Block Party
- Adopt-A-Family
- Art
- Music
- Photography
- Gardening
- Grilling
- Fund Raising
- Historic Preservation
- Serving on the ELNA Board
- Website/Technical Management
- Baking/Cooking
- Other: _____