

East Lawrence News

East Lawrence Neighborhood Association
P.O. Box 442393 Lawrence, Kansas - eastlawrence@yahoo.com

November 2015



www.eastlawrence.com

ELNA

General Meeting

MONDAY, NOV. 2nd, 7-9pm

New York Elementary

9th & New York

Agenda item includes:

⇒ ELNA Board Elections

Board Contacts

Aaron Paden, President

.....aaronpaden@gmail.com
785-840-6400

Jacki Becker, Vice President

.....jackioh@uptoeleven.com

Katherine Harris (KH), Treasurer

.....HarrisKMTC@gmail.com

Pam Blackburn, Secretary

.....pamblackburn55@gmail.com

Christine Kosirogckosirog@yahoo.com

Phil Collison..... phil@collison.com

Dave Loewenstein

.....dloewenstein@hotmail.com

Josh Davis cjwadavis@gmail.com

Arch Naramorearch@sunflower.com

Sara Minges

.....sara@playfulawareness.com

Brenda Nunez 785-393-9138

Eric Jay.....eric@structrestruct.com

Cindy Suenram csuen3@sunflower.com

KT Walsh 732 Rhode Island St.

ELNA Contacts

Lane Eisenbart, Coordinator

eastlawrence@yahoo.com 785-330-3552

www.eastlawrence.com

ELNA Board Elections and Candidates 2015-2016 Year

Annual Meeting Monday November 2nd 7pm at New York School

The ELNA Board is comprised of a maximum of 14 members. Our bylaws require that the previous year's president must retain his or her seat on the Board into the following year. Only 13 seats are open for re-election at this time.

The seat of the Board member who holds the Treasurer's position WILL be up for re-election, contrary to previous statements.

The candidates for the ELNA Board, along with each person's contact information, are listed below. You may contact each personally with questions regarding his or her opinions and positions on neighborhood issues.

All bonafide, resident in-neighborhood ELNA members may vote to select a maximum of 13 of these 23 to represent as the ELNA Board.

Current Board Candidates

Dave Loewenstein	dloewenstein@hotmail.com
Jacki Becker	jackioh@uptoeleven.com
Josh Davis (Penn St)	cjwa.davis@gmail.com
Cindy Suenram	csuen3@sunflower.com
Phil Collison	phil@collison.com
Christine Kosirog	ckosirog@yahoo.com
Eric Jay	eric@structrestruct.com
Pam Blackburn	pamblackburn55@gmail.com
KT Walsh	732 Rhode Island
KH Harris	harriskmtc@gmail.com

Other Candidates

John Gascon	john.gascon@gmail.com
John Sebelius	johnsebelius@gmail.com
Codi Bates	codilee.bates@gmail.com
Amanda Davis	amanda.woodward@gmail.com
Joshua Davis (NY St)	jd12345@gmail.com
Patrick Watkins	prwatkins@hotmail.com
Mike Anderson	mtanders4@yahoo.com
Bruce Eggers	egggers.bruce@gmail.com
Matt Pryor	matthewpryor@mac.com
Kent Fry	kentfry@gmail.com
Mark Francis	mfrancis@ku.edu

ELNA Adopts-a-Family for the Holidays

Want to help ELNA adopt a family for the holiday season?

Each year, the East Lawrence Neighborhood Association adopts a family (or two) in need of assistance through the Ballard Center. As a group, we purchase gift cards and gifts for the selected family. In the coming weeks, we will receive a wish list of items from the family. As soon as we acquire this list, we will be looking for neighbors to purchase and donate gifts. If you would like to volunteer to donate items, contact Christine Kosirog, 218-6786 or ckosirog@yahoo.com, or Lane at eastlawrence@yahoo.com.

ELNA Presidents of the Past: A Retrospective -- Lane Eisenbart

I asked all former ELNA presidents still available for contact to reflect on their time as President --when they served, and what they felt was the defining issue of their presidencies. I also allowed for each to elaborate as they wished.

Josh Davis Nov 2012 – Nov 2013

The biggest issue in my time was the designation of Lawrence's "Cultural District", comprised primarily of East Lawrence in addition to downtown.

Leslie Soden interim June 2011 – Nov 2012

I served as President from August 2011 to November 2012. A month after I became President, the development plans for the Marriott Hotel building at 9th & New Hampshire appeared. I spent most of my term working on that project, and while I wouldn't use the word "fun" to describe that time, it stretched my personal boundaries of what I thought I could and couldn't do. If it weren't for that time, I wouldn't have become fascinated with city hall issue and politics, which eventually led to me becoming a Lawrence City Commissioner last April. Representing diverse voices is hard work, but incredibly meaningful for me.

I wrote these words for the March 2012 ELNA newsletter as President, and they still apply today:

"Living in Old East Lawrence for 8 years, it certainly seems like we are constantly fighting off other, more influential people and what they think our neighborhood should be. Behind the vague adjectives of "revitalize" and "improve" and "unstable" and "blight" runs a basic undercurrent that there is just something wrong with our neighborhood and that it needs to change. But people choose to live in our neighborhood for how it is now! Flowing through our neighborhood are the twin philosophies of "live and let live" and "one person's trash is another person's treasure". While "open-minded" is merely a buzzword for some people, it is an actual way of life here, and people really respond to that refreshing change of attitude."

Deron Belt Nov 2009 – June 2011

"I have little recollection of any one defining issue during my time with ELNA. I will say that I am very grateful to have been given the opportunity to contribute. My fondest memories are those where the collaborative efforts of neighbor's came to fruition in reaching a common goal (i.e. block party, YART sale, a BCRT clean-up, and so on).

I do remember pondering the pace of change within the neighborhood. East Lawrence is a stew of changing pieces, persons, and place. The neighborhood is steeped in a history of passionate citizenry with a penchant for the dramatic. I believe that this tireless intensity has served the neighborhood well. Still, change is difficult. We literally cannot stop this change from happening. Often the process of change is slow. Other times fast, maybe too fast for those whose voices may go unheard. Even change intended for the betterment of all can leave some with profound feelings of loss and fear. How do we account for these folks? These are real people with concerns, whether we agree with them or not.

That said, I do think it's helpful when parties contributing to change are mindful of what came before them and to what may follow as a consequence of their actions. Showing some compassion and empathy may go long way to being perceived as neighborly. While it may be the very least we can do assuage fears, it's certainly worthy of the effort."

Phil Collison Nov 2006 – Nov 2009

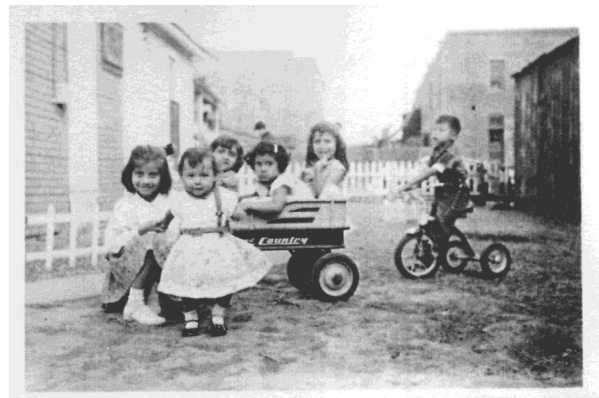
"I was ELNA President during a quiet period in the 'hood. Things had quieted down in the 800 Penn area. During my time as President, we worked on trying to build a more inclusive ELNA with the introduction of the Thursday ELNA News, and we also created the first ELNA website. The KVKL Sunday Night game came to Hobbs Park and ELNA began selling concessions there. I continue to live in the neighborhood and continue to advocate for our neighbors."

Janet Good Nov 2003 – Nov 2006

"The big issues in my time as President were Bo Harris at 8th and Pennsylvania and Krause Fine Dining. Bo Harris wanted to construct a brownstone live-play-work kind of inclusive development. (The economy tanking took that one down.) These two issues were very similar to what's happening now, in that they divided the neighborhood, especially between newer residents and long established ones. Bo Harris said that he thought EL would gentrify no matter what ELNA or the residents did, because of where it is in Lawrence. Sadly, he might be right. We'll lose something great if it does.

EL is what it is, great, because it was allowed to change very organically. No major development made it what it is, the people who have lived here fighting to keep it an affordable single family neighborhood, while preserving it's history, have. There would be no neighborhood at all had people not fought for it all along."

To illustrate her feeling of what she felt might be lost, Janet included some of her favorite historical East Lawrence pictures – "of the hispanic neighborhood that was at 8th and Penn and bulldozed to make way for the "eastern bypass" before people realized what was coming and stopped it."



8th and Pennsylvania



River Clean Up Thanks

Thanks to everyone who came out October 3rd to help clean up the River. The weather was perfect and we had a bountiful harvest!

Thanks Tom Harper, Joshua Davis, Aaron Paden, Oscar Paden, Elliot Paden, Benjamin Wright, Katy Meston Ward, Jenine Meston, Daniel Ward, Lexi Meston Ward, Dani Flani, Daina Bitters, Zoe Bitters, Charlotte Pessoni, Linda Lips, Matthew Bellemere, Cris Combs, Erin Besson and Family, Goldy Stephens, Melissa Freiburger!!!

Let's do it again in the Spring!

~Mike Myers

Block Party Thanks

Thank you! That was a pretty good party, neighbors, and we couldn't have done it without your help. Thanks to everyone who volunteered their time, donated raffle items, played music, and set up their tables to inform us about some stuff. And special thanks to everyone who brought delicious food for us to share!

Lindsey Frye	Aaron Paden
Russel Benke	KT Walsh
Lisa Marie Benke	Michael Davis
Cindy Suenram	Patrick Watkins
Arch Naramore	John Myers
Gotfred Beardshear	John Sebelius
Greg Herrod	Phil Collison
Rowyn Fisher	Chris Lempa
Jason Fisher	Mike Rheim
Brenda Nunez	Eric Farnsworth
Pam Blackburn	Community Village
Scott Blackburn	Lawrence
Christine Kosirog	Sunrise Project
Blue O'Leary	Intersection Repair
Tim VonHolten	Erin Adamson
Cari Davis	Lawrence Percolator
Stephen Mason	Emily Myers
Annie Neri	Jacki Becker
Eric and Josie Jay	James Krause
Josh Davis	Sugarfoot Detour
Joe Bickford	Clementine
Mike Myers	Tony Peterson

Decade
The Recyclery
Cottin's Hardware
Ladybird Diner
Aimee's Coffeehouse
La Familia
KH and Irene
Acme T-Shirt
Burger Stand
Dave Loewenstein
The Roost
Liberty Hall
Merchants
Mass Relaxation
Yankee Tank Brewing
Pride of Gumbo
Screen Printing

Lane Eisenbart did all the things, and her board won't let her publish the list without including herself, even if it's lame.

Neighborhood Thanks from KT

Neighbors would like to extend special thanks to Shelley Wakeman for her (pro bono legal) help to our friend and neighbor, Leon, at 1231 Pennsylvania. Her willingness to help Leon is appreciated. We'd also like to thank neighbor Don Kantory for his assistance in bringing attention to the rehabilitation of the Amtrak Depot. Don put lots of work into the project in its early stages and we appreciate that, too!

We have a Twitter too!

Get your neighborhood news short and sweet.
Follow us, ELNAks, on Twitter.



E
L
S



Block Party

September 2015



Downtown Grocery Project Current Status and Goals

The Downtown Grocery Store core group has met weekly for nearly three years, and continues to work toward our common goal of an affordable full-line store to serve downtown and the surrounding neighborhoods, which comprise a federally-recognized food desert. A recent news story described a renewed focus on the site at 7th and New Hampshire, the building formerly occupied by Borders bookstore. (Because of limited space for parking, the 11th and Mass project plans no longer include a grocery store.) We are very pleased that the building owner, our city commission, and adjacent neighborhoods are all pulling in the same direction to make a downtown grocery store a reality. We are encouraged that multiple grocers and a pharmacy are seriously interested in establishing downtown retail locations. The Old West Lawrence neighborhood association has supported the downtown grocery store project since the beginning. As plans move forward, your support, and that of the other central-city neighborhoods, is still vital to the success of the project.

Thank you for your continued support, and please let me know your thoughts or questions about the project.

Downtown Grocery Committee
Dave Crawford, committee chair
dave@davecrawford.org
785.218.4279 txt/voice

How to get around on the bus in Lawrence

Many people know that the City and KU created a coordination transit system a few years ago. What it means is that riders can get on any bus in Lawrence and pay only one fare. Whether you see a blue bus that says “KU” or “T” on it, anyone is welcome to ride.

Lawrence Transit System provides service in East Lawrence with several routes. Routes 1, 11, and 15 all have bus stops in the neighborhood. All three of those routes connect to the downtown hub at 7th & Vermont, where you can transfer to reach other parts of the city.



Route 1 offers service between Downtown and Prairie Park. Route 11 connects Downtown with the KU campus and 31st & Iowa. Route 15 goes from Downtown to the Peaslee Center and East Hills Business Park.

So, how much does the bus cost? If you pay cash, it is \$1.00 for full fare and \$.50 for reduced fare. Reduced fare applies to those in grades K-12, Haskell students, seniors age 60 and over, or people who have a T Lift or Medicare card. Bus

New York Garden Club News

Some very exciting things are happening with New York School Garden Club! The New York School garden is now officially a participant in the District’s Farm 2 School garden program. With some help from the School District, we hope the school garden produce will be served in the school cafeteria with breakfast and lunch meals as early as this spring. Fantastic news! AND, The American Institute of Architecture Students at KU has selected New York as their project for the year. Each year this group of student architects picks a project to design and build for a group of handicapped or low income individuals. They raise all the money and do all the construction. Mrs. Saltz and Mrs. DeGarmo have met with their lead student and decided to build a shed in the SE quadrant of the playground for our garden! The plan is to design and fund-raise for the project this winter, and to begin building a very unique and kid-accessible structure in early spring. If we can raise enough money, we will also get a greenhouse! Please stay tuned for upcoming fundraising/ donation opportunities. Some ideas in the works are a partnership with Cottin’s Hardware, direct donation of building materials from friends and neighbors, a Chipotle fundraiser, a can collection, and an event for silent auction. Also, keep a look out in early spring for the call for new Garden Club members. With questions and ideas, contact Mrs. Saltz ssaltz@usd497.org. For frequent updates, check out the New York Elementary Garden Facebook group.

passes can be purchased at Dillons, Hy-Vee, The Merc and City Hall. Monthly passes are \$34 for full fare and \$17 for reduced fare, and 10-Ride punch cards are \$10 for full fare and \$5 for reduced fare.

Buses run from 6 a.m. to 8 p.m. Monday – Saturday. For after-hours service, you can schedule a ride on the Night Line by calling (785) 312-7054 Monday-Friday between 8 a.m. to 5 p.m. Night Line will pick you up and drop you off anywhere in Lawrence. It runs from 8 p.m. to 6 a.m. Monday – Saturday. The fare is \$2.00, cash only.

For assistance with route planning, call (785) 864-4644 to speak to a customer service representative. Transit Guides with maps and schedules are available at most grocery stores, City Hall, or the Public Library. An online trip planning tool can suggest multiple ways to reach a destination. Try it out at www.lawrencetransit.org.

To get real-time information on when the next bus will arrive, you can download the app “MV Transit Where’s My Bus,” available on both iTunes and Google Play. You can also send a text to (785) 312-2414 with the bus stop number as the message. All bus stops have the stop number displayed on the sign. You will receive a message back with the upcoming bus arrival times for that stop.

For more information on Lawrence Transit services, go to www.lawrencetransit.org.

Safe Winter Walkways Program

The City of Lawrence and Douglas County Senior Services needs your help! The Safe Winter Walkways program kicks off this week and volunteers are needed to help elderly or disabled individuals clear public sidewalks during snow events.

Able-bodied Lawrence residents with a passion for helping others and an enjoyment of winter weather are needed to volunteer for the Safe Winter Walkways program. The goal of the Safe Winter Walkways program is to create safer and more accessible pedestrian walkways. This is a joint effort of the City of Lawrence and Douglas County Senior Services (DCSS). Volunteers will be matched with residents needing assistance with snow removal for the winter season.

In 2014, 87-percent of people who signed up for help did get paired with a volunteer. Last year, 80 households signed up for assistance but 10 people were unfortunately not paired with volunteers due to the demand for the program and a need for more volunteers.

This year, the city is again offering online registration for participants and volunteers. Visit www.lawrenceks.org/safe_winter_walkways to sign up for the program. This year, the program will close participant sign up on November 20, 2015. This date has been selected so that participants and volunteers can be matched prior to the holiday season, and hopefully, prior to snow season.

"This program is an excellent resource for members of our community who physically can't keep their sidewalks clear during snow events," said Megan Gilliland, communications manager for the city. "This program is a structured version of what has happens in many neighborhoods - neighbors helping neighbors. With volunteers, we can make certain that the neighbors can count on a volunteer to be there if snow needs to be removed."

"This year, it is critical that anyone who is interested in volunteering sign up in advance," said Gilliland. "Our program is most effective when the volunteers and residents are paired up before bad weather hits and we can react quickly."

Volunteer groups, civic organizations and youth groups are encouraged to consider volunteering as a team. Please contact Larry Woydziak with DCSS to find out how to sign up as a group and requirements for volunteering.

"This program is for public sidewalks only," said Woydziak. "We give priority to homes with public sidewalks and volunteers are not required to provide snow removal for private driveways, sidewalks or walkways--this is left to the volunteer's discretion."

Volunteers can sign up by calling (785) 832-3338 or registering online at www.lawrenceks.org/safe_winter_walkways.

ELNA is on Facebook!

Like our fan page at
<http://www.facebook.com/eastlawrence>
and look for updates regarding neighborhood events.

July 1, 2015

Raymond Hall

SNAKE STEW – part two

I carried my 12-gauge sawed-off semi.
We headed down the Neosho River,
to Cow Creek, its tall trees dimly crowding,
the mud, primeval; dank, musty ragweeds.
A railroad bridge crossed it, up fifty yards.
It clouded up quickly. Some raindrops plunked.
"They're easier to spot on days like this,"
he said. Two bullfrogs croaked. He had a plan.
He'd walk through the woods to the railroad bridge.
He'd wait there for the snakes I could scare up.
"We'll shoot enough for a snake stew pig-out
with a keg of Coors for the neighborhood.
He started out, then hesitated. "Dad
was killed up there. " He pointed at the bridge.
At my respectful nod, he continued,
"He and I were here for bullfrog legs then.
He had a pint of moonshine white. He was
nipping at it, he stretched out on that bridge.
I was shooting frogs, and I had got to here,
when I heard the train. I ran, waving my
arms, yelling, Dad! Get the heck down from there!
He dropped, decapitated. The creek
was shallow there. Then like a chicken with
his head chopped off, he ran." He watched me blanch.
He straightened up, and as he headed out,
said, "See you later," disappearing fast
in the gloom. Suddenly, he was perching
on that railroad bridge. Then chugging the pint,
leaning back further, and further, let his
legs dangle, the only part of him that
I could see. I heard a train. I jumped in,
running in that shallow, soiled water.
I shot his legs. He was too far away.
The train tunelessly rumbled and roared on.
Nothing was left above his chin; just two
red, pulsing, vertical wires. He stumbled.
Dark, gray cottonmouth snakes, mouths white inside,
seized festively. A dozen. Then some more.
And then, on top of that, a viper
head popped up too close. He watched me, briefly.
And sullied. I got a head shot in time.
It wrapped my arm, lovingly, going home.
I fillet out two pounds of stewing meat.
I didn't take off for the funeral.
So what? He hardly was a good old boy.

East Lawrence Neighborhood Association
PO Box 442393
Lawrence Kansas 66044-2393

PRSRT STD
U.S. POSTAGE
PAID
LAWRENCE, KS
PERMIT #542

Join ELNA for \$1.00

HELP YOUR NEIGHBORHOOD – GET A BIG BANG FOR A BUCK!

Your \$1.00 membership in ELNA and contact information help us represent East Lawrence in our city and county government and to meet the needs of our neighborhood. Please note, memberships are per individual, not per household.

Support us. Let us support you.

\$1.00 for in-neighborhood individuals \$5.00 for out-of-neighborhood individuals
\$10.00 for in-neighborhood non-profit entities \$20.00 for in-neighborhood businesses
\$100.00 lifetime individual membership

Date: _____ Name: _____

Address: _____

Phone: _____ E-mail: _____

- We print the names of new and returning members in the bimonthly paper newsletter. Check here if it's OK to print your name.
- We're working on creating a block-by-block calling/check-in network of neighbors to contact in the event of an emergency. It's a work in progress. Check here if you'd like to be contacted about being a BlockHead—a contact person for your block in the event of emergency or issue.
- Check here if you'd like to be added to our "Thursday ELNA News" weekly e-newsletter email list.

Send this form and your check payable to ELNA to:
ELNA, PO Box 442393 Lawrence KS 66044

Plus! Visit ELNA's website for information on *new* tshirts and merchandise!
Click the paypal button to donate securely there!

ELNA Needs Your Help! Please Volunteer!

Mark what ELNA events/skills you would like to volunteer for:

- Work Days
- YART (Yard/Art) Sale
- Block Party
- Adopt-A-Family
- Art
- Music
- Photography
- Gardening
- Grilling
- Fund Raising
- Historic Preservation
- Serving on the ELNA Board
- Website/Technical Management
- Baking/Cooking
- Other: _____