

East Lawrence News

East Lawrence Neighborhood Association
P.O. Box 442393 Lawrence, Kansas - eastlawrence@yahoo.com

September 2015

www.eastlawrence.com



ELNA

General Meeting

TUESDAY, SEPT. 8th, 7-9pm
New York Elementary
9th & New York

Agenda items include:

- ⇒ Adoption of bylaw changes
- ⇒ Review of the Complete Street Design Document from the East Ninth project
- ⇒ Block Party Planning

Board Contacts

Aaron Paden, President

.....aaronpaden@gmail.com
785-840-6400

Jacki Becker, Vice President

.....jackioh@uptoeleven.com

Katherine Harris (KH), Treasurer

.....HarrisKMTC@gmail.com

Pam Blackburn, Secretary

.....pamblackburn55@gmail.com

Christine Kosirogckosirog@yahoo.com

Phil Collisonphil@collison.com

Dave Loewenstein

.....dloewenstein@hotmail.com

Josh Daviscjwadavis@gmail.com

Arch Naramorearch@sunflower.com

Sara Minges

.....sara@playfulawareness.com

Brenda Nunez785-393-9138

Eric Jayeric@structrestruct.com

Cindy Suenramcsuen3@sunflower.com

KT Walsh732 Rhode Island St.

ELNA Contacts

Lane Eisenbart, Coordinator

eastlawrence@yahoo.com785-330-3552

www.eastlawrence.com

Mark Your Calendars

The Annual Block Party Returns

On Saturday, September 26th, from 5--9pm, at Hobbs Park, ELNA will throw its annual block party. Come and join the fun! We will have all our favorite things -- food, entertainment, games and lots of great neighbor-mingling!

The block party can't happen without volunteers. Please read the list of events, and see what kind of help we need. Contact eastlawrence-@yahoo.com to volunteer.

Food! ELNA will supply the drinks and grilled fare. *We ask that all neighbors bring a side dish or dessert to share. Volunteer to take a turn at the grill. Volunteer to be on trash duty.*

Best Dish! By popular demand, our annual Best Dish competition. We want you to bring out your best for the block party. There will be a contest for the best side dishes, dessert and vegetarian fare. *Volunteer to be a judge!*

Cake Walk! Cake Walk! Cake Walk! The cakewalk, a neighborhood favorite, always popular with the kids, is back! *We need you to donate a cake! If you plan to play cake walk, bring a cake!*

Prizes! We always have great door prizes, and we need donations to make this happen. *Donate your art! Go out and ask for donations!* Contact eastlawrence@yahoo.com if you have an item for the prizes.

Music! East Lawrence always brings out its best musicians on this night. *Do you want to help recruit acts and organize sets? Would you and your band like to play?* Contact eastlawrence@yahoo.com if you'd like to play or volunteer.

Bike Repair! Get your bike fixed by our friendly neighborhood bike mechanics. *It's the perfect time to start your bicycle commute!*

ELNA T-shirts! ELNA t-shirts will be for sale at the block party. What fall wardrobe is complete without an ELNA shirt? Maybe we'll even have ELNA hoodies in stock again!

Set-Up & Take-Down! *Be an ELNA hero, volunteer to set up or take down!*

Trash Duty! Not glamorous, but NEEDED! *Volunteer to be on trash duty!*

Bylaws, Elections, and Voting Changes

The bylaws that govern the East Lawrence Neighborhood Association have been under review for the last several months by the ELNA Board and Coordinator, with public input. Some changes made include: an updated list of lifetime members, an addendum for business lifetime memberships and costs, removal of mention of monthly board vs. general board meetings (the distinction has never been clear, definition of what constitutes notice of meeting (to include electronic means), and several points to clarify election procedures and voting eligibility. The final copy to be adopted will be voted on by the Board and attending membership at the September 8th meeting.

Readers will want to pay special attention to the election procedures and voting eligibility as ELNA Board elections are coming up in November. New this year, prospective Board members are asked to declare their intention to serve on the ELNA Board at the October ELNA meeting, October 5th 7-9 pm at the New York School library. As always, only neighborhood individual (not business or nonprofit or out of neighborhood associate) members are eligible to vote for the ELNA board. All Board members must be voting eligible. Officers of the Board (President, Vice President, and Secretary) must have been board members for at least ninety days.

Further questions can be addressed by reviewing the bylaws on the ELNA website or directed to the Coordinator at eastlawrence@yahoo.com.

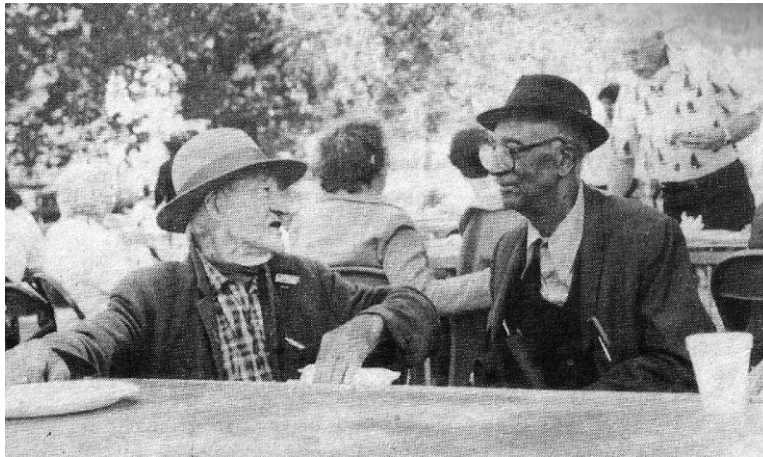
Heartland Has Moved!

– Rachel Hartford, HCHC Community Relations

In July, Heartland Community Health Center, formerly in the Riverfront building at 7th and New York St, moved to the Medical Arts Building (346 Maine Street, Suite 150). This move places Heartland closer to several key community partners, improves its accessibility for patients, and increases Heartland's capacity to provide high-quality, affordable care. Heartland has grown rapidly over the past several years and the organization is now able to serve more patients than ever before in the bigger, more accommodating space!

Heartland Community Health Center remains a non-profit medical clinic committed to serving all people, regardless of income or insurance status, offering primary and mental/behavioral health care to residents of Douglas County and surrounding areas. As a medical clinic that offers integrated care, Heartland provides high-quality care for the whole person: physical, mental, emotional, social, and spiritual. Heartland offers an array of health services all under one roof, including diabetic care and prevention, smoking cessation, behavioral health care, medication assistance, a food pantry, Health Insurance Marketplace enrollment assistance, and much more.

Heartland is accepting new patients and offers same day, next day appointment availability for its patients. Call 785-841-7297 to schedule an appointment or check out heartland-health.org for more information.



"Harry Puckett and Rev. Sims, East Lawrence Picnic 1982"

photo credit to the website Lawrence, Kansas, 1970s

<https://lawrencekansas1970s.wordpress.com/public-notice/> check out more great photos there!

ELNA is on Facebook!

Like our fan page at

<http://www.facebook.com/eastlawrence>

and look for updates regarding neighborhood events.

We have a Twitter too!

Get your neighborhood news short and sweet.

Follow us, ELNAks, on Twitter.

Jesse Jones of the Social Service League – interview by Lane Eisenbart

New Social Service League manager, Jesse Jones, visited as a guest at the last ELNA meeting, Monday August 3rd at the Percolator. Jesse was informative and entertaining, and in order to share his words with the neighborhood at large, we asked him these questions:

What is your educational/employment background? Where you comin' from, Jesse?

I am coming from the Wichita area, but have called Lawrence home for 10 years now! I transferred up to KU my junior year and have been in love with the city ever since. I have a Bachelor's degree with double majors in Psychology and Women's Studies with concentrations in human sexuality and gender based violence. While in undergrad, I was given the opportunity to volunteer at the local domestic violence shelter. Working at Women's Transitional Care Services completely changed my life and set me on a lifelong dedication to service. I learned that there are two types of people in this world: 1) People who want to make the world a better place, and 2) People who are crazy enough to think that they can. ;-). I was fortunate enough to have amazing mentors at WTCS who helped guide my comprehensive understanding of human services and what it truly means to be a social justice advocate. I spent 6 years at WTCS (now The Willow) spending my final 4 years as the Children's Program Director. While serving at the Willow I knew that if I wanted to maximize my impact on making this world a better place, I needed an advanced degree. The original plan was international human rights law, but the stars for one reason or another did not align on that path. Instead, I pursued and obtained a Master of Public Administration with concentrations in Nonprofit Management and Public Policy. The dream is to someday run a nonprofit organization working towards the promotion of universal human rights or to run an animal sanctuary. While working on my Master's I wanted to gain some governmental work experience, so I took a job at SRS/DCF and worked in Child Protective Services for three years before returning to my nonprofit roots and taking my current position with SSL.

Why do you choose to serve at the League? Besides the glamour and wealth.

The Social Service League has a very rich and diverse history. I am still working on fact checking for my organizational sales pitch, but I know that the League is the oldest non-faith based nonprofit/charitable organization in Lawrence and Kansas. I have heard rumors that it is the oldest west of the Mississippi and possibly the longest running thrift store in the United States. It has such an amazing history and has helped literally thousands of people over the last 150 years. The fact that the original founders started this organization during the Civil War is pretty mindboggling.

What's your favorite thing about the League?

It would definitely be the rich and diverse history and the grassroots feel of the organization.

What would you like to change there, or, what would you like to stay the same?

The organization has gone through some fairly significant operational, cosmetic, staffing, governance, and cultural changes in the last 2 years, so my leadership approach is going to be geared towards building stability rather than adding more change. The one organizational goal I would like to work on is rebuilding the culture of solidarity with the community. I have heard amazing stories of what the culture of the League used to be, and I would love to work towards restoring that culture.

What do you want people to know about you as the new Social Service League manager?

My name is Jesse Jones. I am a Pisces and I like long walks on the beach and cherry cheesecake. Just kidding! About the beach...I love cherry cheesecake. I am a human rights advocate, social justice activist, and am addicted to Hershey's Syrup and claw machines. My research interests are based in nonprofit organizational theory and social constructionist feminist theory. I am a country boy who enjoys gardening, writing poetry and children's books, as well as working on small gas engines and painting. I am a first generation college student who in lesser words "came from very humble roots." I am honest, compassionate, have a bleeding heart, a python named Lochai, a tarantula named Tahlua, a love for the Oxford comma, and three fish tanks. My favorite color is purple. I am a former amateur bodybuilder and someday would love to learn to play the bagpipes. I will always base the decision making authority vested to me by the governing board of Social Service League to help every individual that walks through the door at 905 Rhode Island. I will always apply my work ethic, professional skills, education and training to fulfill the mission of the organization while developing and executing sustainable nonprofit business practices. I am here to serve the community. I know I have really big shoes to fill, but my feet are size 15 double wide and as flat as can be. They will never fit in Jean Ann's shoes, but I will always do my best to walk in the direction of the spirit of her service. I will always operate with transparency and integrity. If you ever have a need or concern, I have an open door policy and would love to hear from you, just bring chocolate...or cheesecake.

How can the neighborhood, as individuals and as a group, help you and the League?

We are working on developing some new programs and procedures, so please be patient with us as we try to maximize the efficiency of our operational procedures with the limited resources that we have available. We are currently beginning the process of developing a comprehensive volunteer program. If you are interested in volunteering on a scheduled basis or for certain specialty activities or events please feel free to email me. I have several specialty projects I would like to have help with, especially the recycling project. We are always in need of men's clothing and nonperishable food items. As we move forward and I have more specific needs I will be sure to communicate those needs.

continued on p. 7

East Ninth Project Update

Upcoming Meetings / Dates

SEPTEMBER 2015

Sept 1: Complete Street Design Document Submitted to City/CAC/Stakeholders

The Complete Street Design Document will be submitted to the City of Lawrence, emailed to all stakeholders, and available for review online shortly thereafter.

Sept 8: ELNA Meeting/Review of Complete Street Design Document

Members of el dorado inc will be at the September ELNA Meeting 7-9pm, New York School library - *please note the date change, from Monday to Tuesday, due to the Labor Day Holiday* - to answer any questions regarding the Complete Street Design Document

Sept 9: LCAC Review of Complete Street Design Document

The Lawrence Cultural Arts Commission will review the Complete Street Design Document at their meeting at the City Commission room at City Hall at 7pm. The public is invited to attend.

Sept 15: City Commission Review of Complete Street Design Document

City Commission Meeting, 5:45, City Hall

OCTOBER 2015

Oct 28: CAC (Citizen Advisory Committee) Meeting

6:30pm Lawrence City Hall, public meeting

Selected East Ninth Artists

As of August 4th, 2015, eight artists have been selected to provide public art pieces for the East Ninth Project -- five for the *East Ninth Artists* and three for *Integrated Works* portions of the Work Plan.

The *East Ninth Artists*, all from Lawrence, are Meredith Moore, Rachael Perry, Nick Carswell, Zia, and Stephen T. Johnson. The *Integrated Works* artists include Jarret Mellenbruch, James Woodfill from KC MO, and Derek Porter from New York City.

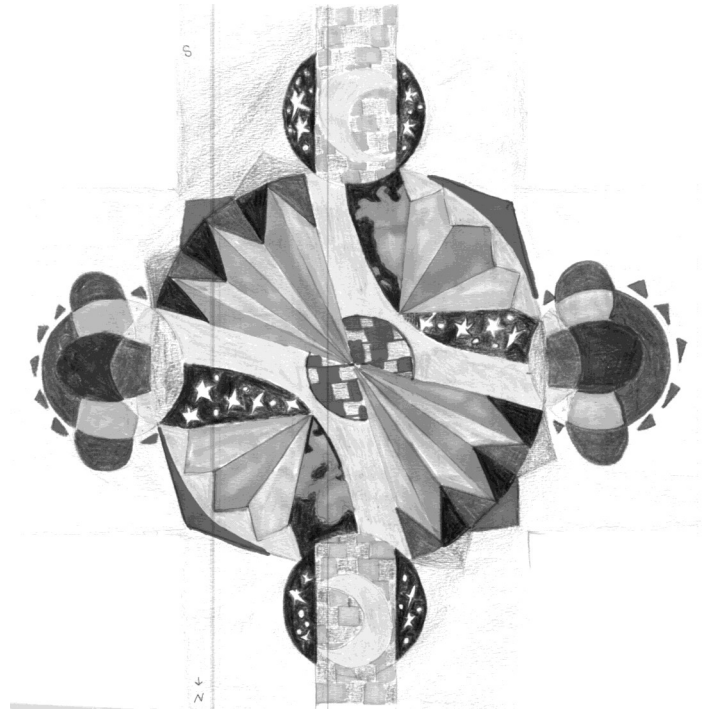
Input for the artists and their projects can be directed to a general East Ninth email address integratedeastninth@gmail.com.

Intersection Repair Update!

A draft of the final design has been completed and we are currently working with the City on additional requirements for the project. We aren't going to be able to have the painting party in September as we had hoped, but we are planning on having it in October at the earliest, or in Spring at the latest.

We appreciate the community's continued support and will continue to keep everyone updated! You can check out our facebook page [facebook.com/lawrenceintersectionrepair](https://www.facebook.com/lawrenceintersectionrepair) for more news and updates. See below for a rough draft of the design, don't hesitate to let Alicia or Katy know if you have any questions or concerns. We can be reached at akellyit@gmail.com or katy.clagett@gmail.com.

Cheers!!



Zoning Update

I now know what hell is like... a City Commission meeting. I attended the City Commission meeting on August 18th, and left after our zoning item, at 10:45 pm.

Planning presented preliminary findings on current zoning of East Lawrence, north of 9th. ELNA requested that the rezoning effort continue by planning. The City Commissioners agreed. The next steps are for planning to continue more detailed research on current usage for each property and identify use that doesn't fit any current category. There are single family dwellings, more than one single family dwelling on one property, duplexes, and multi-family units to name a few. I will keep everyone informed as more activities occur. Any questions, please contact me.

Pam Blackburn
913.481.5926
pamblackburn55@gmail.com



Tom Harper
CRS, ABR, GRI,
e-PRO, REALTOR
785-218-6351
*Appreciating
Older Homes*

visit my website
Tom-Harper.com



free legal help

If You Need Legal Help - Where Can you Go?

Whether it be for a traffic, criminal, civil or other legal issue, each week at the District Attorney's Office, we get calls from people who do not already have a private attorney, but they find themselves in the position of needing immediate legal advice. These people turn to our office because they do not know where to go for help. Unfortunately, our office is statutorily prohibited from providing legal advice to private citizens and we cannot make attorney recommendations or refer the callers to specific attorneys. In response to this need within our community, this month I want to provide information on the Kansas Bar Association's (KBA) 'Call-a-Lawyer' phone line.

In the KBA's June 5 press release, they encouraged anyone who needs legal advice to call 800-928-3111 between 6:00 p.m. and 8:00 p.m. The first service was held on June 11 and it will repeated the second Thursday of each month. Attorneys donate their time to answer questions and provide legal advice and information. The volunteer attorneys are members of either the Kansas Bar Association or the Topeka Bar Association and can provide information on many legal issues. There is no charge for the service.

What if your issue cannot wait until the next 'Call-a-Lawyer' date? The Kansas Bar Association runs two on-going programs that may be of assistance to you. The first is the Lawyer Referral Service (see number listed above). The KBA can give you the name and contact information of a lawyer with experience in the applicable area of law that you are seeking. That lawyer will provide you an initial consultation for 30 minutes for no more than \$15. The KBA also runs the Lawyer Advice Line through the same number. The Lawyer Advice Line will connect you with an attorney who can give you immediate legal advice about your legal issue for a fee of \$3.00 per minute. The amount is billed to your phone bill or to a credit card.

The KBA also provides pamphlets on a number of legal issues such as Aging and the Law, Is a Living Trust for You?, Living Wills and the Durable Power of Attorney for Health Care Decisions and more. For a full list of available pamphlets, see this link: [Kansas Bar Pamphlets](#). Some pamphlets are also available in Spanish.

I hope if you find yourself in need of legal advice and if you do not already have a private attorney, that these resources may be of assistance to you or a family member. If you have a legal issue that involves a consumer protection issue, please remember that our office has a consumer protection division. If you have a consumer complaint, please call our consumer division at 785-330-2849. We have consumer information available on our webpage at District Attorney Consumer Information. We are always ready to serve the citizens of Douglas County.

Sincerely yours,
Charles E. Branson, District Attorney

July 1, 2015
Raymond Hall

SNAKE STEW – part one

The cottonmouth's a snake a few Mainers see.
Unless they've visited a southern state,
and tromped along a river bed down there.

In Eastern Kansas, cottonmouths are found
up every creek, ravine, and river east
of Hayes, the Smoker Hills, and Wichita.

The cottonmouth's a thick, and tapered, snake,
slate grey, built for speed on ground, or water.
It's always making S's as it glides.

They're shy when by themselves, bolder clustered.
If you want to see just one, creep slowly
up to a place where water sets in woods;

you'll get there just in time to watch it scoot.
But if you see a nest of cottonmouths,
you're too close. Turn around and skedaddle.

Then, when you're hunting them, take a precise
and fast semi-auto rifle shooter.

The meat's good for stews, skin's good for hat bands.

The .22 and twelve gauge semi's work.
I went for cottonmouths the first time with
a partner on a fabrication line.

We lived and worked in a mean, lumpen town,
like alert New Englanders catch wind of,
you know, with feral dogs, pigs, and children.

He told me he hunted them with his dad
until his dad was killed, sotted, one day
when they were out harvesting bullfrog legs.

You couldn't say he was a good old boy:
he stayed home, happy with his family,
until his wife divorced him, took the kids,

and half the livestock. He'd watched me shoot. He
knew that I hadn't hunted cottonmouth.
I really didn't know that much about

the tricks of hunting in the damper parts,
as I'd hunted mostly in the Flint Hills,
upriver from this wet, subtropical,

flat region, where the creeks are more like sloughs.
He'd brought along a pint of moonshine white,
a .22 semi, a gunny sack.

to be continued next issue...

**October ELNA Meeting
Monday, October 5th, 7-9pm
New York School Library
Agenda Items TBD**

Love in the East Bottoms, or, Whatever Happened to Miss Lowry

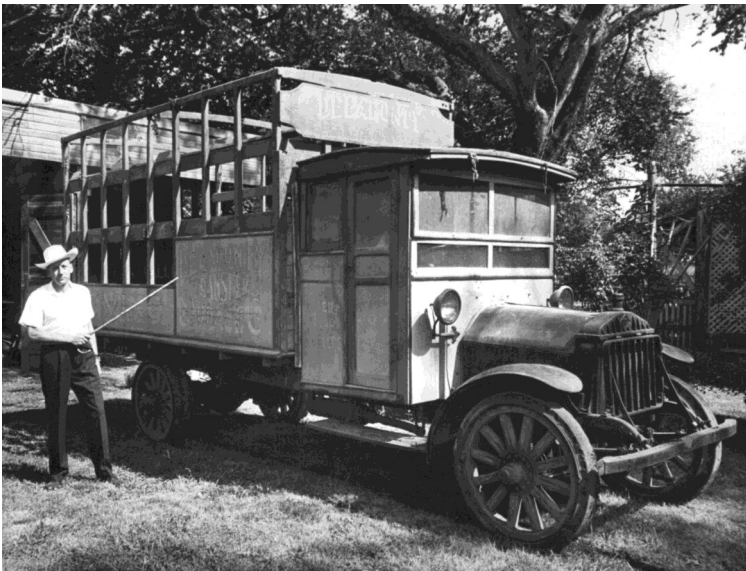
– Lane Eisenbart

Rhody Delahunty was an upstanding citizen, as far as Lawrence Journal World archives are concerned. He came to Lawrence from Ireland in the 1860s, and finding railroad work didn't suit him so well, Rhody established a business and home at 1106 Rhode Island. (1106 Rhode Island is the site currently undergoing remodel/ rehabilitation by Hernly and Associates, best remembered as the "Packard graveyard" lot on the corner of 11th and Rhode Island, across the street from the Judicial Center.) Rhody Delahunty and his carriage service specialized in trucking, moving, and storage, notably hauling much of the building material used to build Fraser Hall.¹

Rhody's son, Tom Delahunty, born at the 1106 home in 1884, took over his father's business in 1919 and continued the family moving and storage service, purchasing his famous and picturesque Diamond T truck to do the hauling. (pictured.) It was the first big truck in Lawrence, Delahunty claimed, and it carried everything from pianos to hay to ladies of the Daughters of the American Revolution and their flowers to local cemeteries each Memorial Day. Tom lived and worked nearly 80 years at 1106 Rhode Island.¹

Rhody Delahunty's hardworking, pioneering ethic and Tom's fancy truck have been much discussed and archived in local newspapers and museums. What's less commonly reported for posterity is Tom's affection for hard liquor and a woman of color named Etta Lowry.

Tom was a known rogue. He was jailed for brawling and drunkenness on numerous occasions. He was unapologetic and bold in his misbehavior, even going so far in 1913 as to get thoroughly intoxicated and wanting to fight *while still in jail* for intoxication and fighting. To manage the feat, all Tom Delahunty needed was a friend, a bottle of whiskey, and a two-foot long insulation tube. A friend of Tom's stood outside the jail, under the pretense of talking with him through the bars (security was a different thing then) while watching some nearby construction. The spaces between the bars of the cell window were too small to pass the bottle of whiskey through, so the friend placed the bottle of whiskey in his pocket, one end of the tubing in the bottle, and the other end threaded through the bars. Tom drank his fill and the stunt was



only discovered when authorities noticed that Tom's friend had been lingering suspiciously long. The friend escaped and Tom's jailers found Tom, still in his cell, "gloriously drunk" and "feeling sure he could whip the entire police force with his hands tied behind him."⁶

Etta Lowry was a formidable woman. In September of 1915, she shot at a former lover (not Tom) "for quitting"² her, but decided against killing him, even though she had two bullets left and he lay prone at her feet, having fallen running from her. And once, when arrested for public drunkenness, (with Tom) Etta was about to be released from custody to presumably "go out and earn the money" for her fine, she decorously produced the \$6.50 the judge didn't believe she had from her handbag and "hiked out of the court room."³

The juiciest tidbits of the Tom and Etta romance tale take place in March of 1908 and February 1914.

Around ten in the evening in March of 1908, Tom and his date, a woman named Minnie Keene, went to the Santa Fe Depot (still the station at 7th and New York Streets) to visit Tom's brother who passing through. Etta Lowry, who had been involved with Tom for some years according to police reports, found Tom and his lady friend at the station and became incensed at Tom's unfaithfulness. Because Etta was the kind of lady to keep a .38 caliber revolver in her purse, *Etta shot Tom*. Twice! Wounding him once in each leg, mid thigh and hip. She attempted to shoot the other woman, but her gun jammed.⁴

Apparently, attempted murder wasn't enough to break up the romance, and Tom and Etta carried on for years after. In February of 1914, Tom was out of jail on parole but bored with the sober life, and so took a night out with Etta. (To add context to the situation, it is understood that at the time these events took place, the consumption of alcohol in Lawrence was a clandestine affair, occurring only in gentlemen's clubs and the occasional house of ill repute on the East Side or, as it was known then, the East Bottoms. Tom, being a working class Irishman, and Etta, being a woman of color, the couple were not welcome at reputable establishments and had to make do on the East Side. It is also understood in the context of the time, that the East Side was home majorly to people of color and work yards.) It was undoubtedly a chilly night, or very early morning, approximately 2am mid-February when Etta flagged down a cab with her hand muff. Tom and Etta got in the cab, telling the driver to take them to a house on New Jersey Street. Along the way, Etta somehow broke one of the cab's windows. What exactly transpired between Etta and Tom and the cabbie over the broken window is unclear, but the cab driver ultimately stayed for a few drinks at the destination. When he was ready to leave, the cab driver asked that he be paid for the window and the ride and an altercation ensued. Three on one, the cabbie was beaten and hit over the head with a bottle, splitting his scalp. The next morning, the cab driver told police about what had taken place, and neither Tom Delahunty nor Etta Lowry were anywhere to be found.⁷

As late as May of 1915, archives show Tom and Etta getting rowdy, and getting arrested, together.⁵

continued on p 7

Community Village Lawrence: New Volunteer Transportation Program - Accepting Applications for Riders and Drivers

Community Village Lawrence is a volunteer-driven non-profit that offers services and support to residents who wish to remain in their homes as they age. We are a group of members and volunteers with the mission to create a network of neighborly support by connecting people to whatever help they need, whether it be a ride to the doctor, help around the house, or a recommended roofing expert.

For people who wish to age in place, losing the ability to drive, or diminished mobility can make it difficult to remain engaged with the community and access important services. CVL will work with and supplement the existing transportation agencies in Lawrence by providing volunteer rides to seniors who need assistance attending medical appointments, shopping for groceries or attending social and education events. We especially want to fill the gaps in service by offering weekend and evening rides, door-to-door support, assistance at destinations (like grocery shopping) and other services.

On September 1, CVL will launch a pilot transportation program that will provide free rides for a 7-week period. This pilot period will allow us to collect feedback, evaluate the program and refine the scheduling and volunteer coordination. The limited scale of the pilot ensures safe and thorough coordination of the drivers and riders while we gain experience. When Community Village Lawrence launches a full range of members services in January, transportation will be just one of many services that members can request.

Applications for the pilot transportation program must be received by September 12.

To request an application please contact Community Village Lawrence at 785-505-0187.

If you are interested in learning more about volunteer opportunities with this grass-roots community organization please give us a call or visit our website:

www.CommunityVillageLawrence.org

Jesse . . . continued from p. 3

How can someone contact you if they need anything or have questions?

You can call or come into the store during normal business hours 10:00am – 6:00pm Tuesday-Saturday (785)843-5414 or you can email me at sslstoremanager@gmail.com. I am usually doing 100 things at once, so I am not able to respond to emails during the day, but will try to respond within 48 hours.

In Peace and Solidarity

Jesse

The Sunrise Project has the Sunrise Garden Center!

The Sunrise Project is excited to announce that Sunrise Green, LLC., with Dave and Susan Millstein as primary investors, has officially purchased the former Sunrise Garden Center! This means that the Sunrise Project will definitely operate from this ideal location!

The Sunrise team is grateful for their partnership with the Millsteins, which has led to securing this nearly three-acre site on the edge of Barker and East Lawrence Neighborhoods. Sunrise Project has raised over \$75,000, but in order to move into the site, they need your continued support! As a new non-profit, they need both operating costs and the funds to either purchase or rent space on the site. Please consider donating at <http://sunriseprojectks.org> or send checks to P.O. Box 1454, Lawrence, 66044. Feel free to contact them with any questions about how your contribution will be used, or to volunteer with the organization before committing to a donation!

With the necessary support, Sunrise Project anticipates operating its programs more fully by fall of this year! Those programs include Healthy Sprouts Farm to Preschool, Food Rocket (cooking club for elementary-aged children), Lawrence Fruit Tree Project and now Summer of Service (youth volunteer program), which was recently transferred to Sunrise from the United Way! They will continue to pilot new programs as they grow, empowering people to live healthy, self-determined lives through engagement with food and the environment to build a socially just community!

Save the Date

Fall River Clean Up

A Fall Riverfront Clean Up is tentatively planned for October 3rd from 8am – 2pm. Watch our Thursday ELNA News email and our Facebook page for more details as they emerge through September. If you're afraid of missing it, email the Coordinator at eastlawrence@yahoo.com and ask to be added to the Work Days list.

Love . . . continued from p. 6

We know what happened to Tom Delahunty; he died at the age of 82 in a nursing home, here in Lawrence, having never married or fathering children, still proud of his Diamond T.¹ But, what about Etta? Aside from her antics, we don't know much about Etta Lowry. Where did she live? How old was she when she met Tom? What did she do for a living? Did she marry? Did she have children? Are there any pictures of her? Did Etta *ever* succeed in killing any of her no-good boyfriends? Though the love? story of Tom Delahunty and Etta Lowry conjures fascinating images it leaves us with as many questions. Whatever happened, we wonder, to Miss Lowry?

Thanks to Dave Evans for research provided and picture credit to the Spencer Research Library, Kansas Collection. References for this piece can be found on our website under the tab "Dave Evans!"

East Lawrence Neighborhood Association
PO Box 442393
Lawrence Kansas 66044-2393

PRSRT STD
U.S. POSTAGE
PAID
LAWRENCE, KS
PERMIT #542

Join ELNA for \$1.00

HELP YOUR NEIGHBORHOOD – GET A BIG BANG FOR A BUCK!

Your \$1.00 membership in ELNA and contact information help us represent East Lawrence in our city and county government and to meet the needs of our neighborhood. Please note, memberships are per individual, not per household.

Support us. Let us support you.

\$1.00 for in-neighborhood individuals \$5.00 for out-of-neighborhood individuals
\$10.00 for in-neighborhood non-profit entities \$20.00 for in-neighborhood businesses
\$100.00 lifetime individual membership

Date: _____ Name: _____

Address: _____

Phone: _____ E-mail: _____

- We print the names of new and returning members in the bimonthly paper newsletter. Check here if it's OK to print your name.
- We're working on creating a block-by-block calling/check-in network of neighbors to contact in the event of an emergency. It's a work in progress. Check here if you'd like to be contacted about being a BlockHead—a contact person for your block in the event of emergency or issue.
- Check here if you'd like to be added to our ELNA Yahoo group. An e-vite will be sent to you.
- Check here if you'd like to be added to our "Thursday ELNA News" weekly e-newsletter email list.

Send this form and your check payable to ELNA to:
ELNA, PO Box 442393 Lawrence KS 66044

Plus! Visit ELNA's website for information on *new* tshirts and merchandise!
Click the paypal button to donate securely there!

ELNA Needs Your Help! Please Volunteer!

Mark what ELNA events/skills you would like to volunteer for:

- Work Days
- YART (Yard/Art) Sale
- Block Party
- Adopt-A-Family
- Art
- Music
- Photography
- Gardening
- Grilling
- Fund Raising
- Historic Preservation
- Serving on the ELNA Board
- Website/Technical Management
- Baking/Cooking
- Other: _____